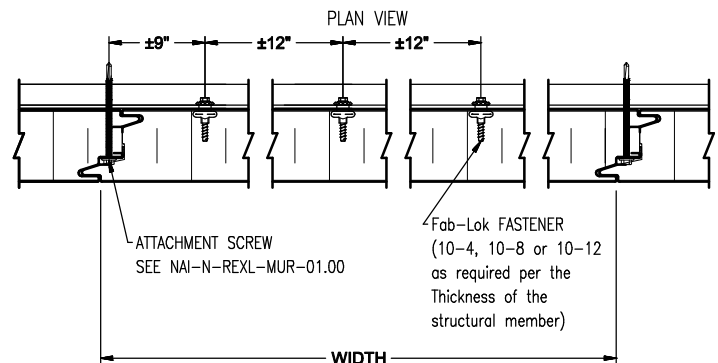


FP4 - FM Class Number 4881	
WALL PANEL:	NOREX-L & NOREX-H
THICKNESS:	3" - 6" [76 - 1522 mm] FASTENING SYSTEM FP4** (LIST BELOW)
WIDTH:	36" - 42 1/2" [914 - 1080 mm]
MAX. HEIGHT:	NO LIMIT
HAIL RESISTANCE RATING:	CLASS S (SEVERE)
MIN. SUPPORT STEEL THICKNESS:	14 Ga. (0.0747 in. [1.9 mm])
MIN. SUPPORT STEEL YIELD STRESS:	50 Ksi (345 Mpa)

FASTENING SYSTEM	WIND LOAD RATING AND ZONE:	MAX. SUPPORT STEEL SPACING: ( S )
FP4	Class +30/-42, Zone H	3048 mm (120 in)
FP4	Class +40/-56, Zone H	2743 mm (108 in)
FP4	Class +45/-63, Zone H	2438 mm (96 in)
FP4	Class +50/-70, Zone H	2134 mm (84 in)
FP4	Class +60/-84, Zone H	1829 mm (72 in)

\*\* Fastening System FP4 = 2 x Clip Attachment Screws ITW Ø1/4" - 14 HWH #3 Self drilling fasteners through a J-Clip at each bearing in Each Panel side joint and 3 x Fab-Lok fasteners (10-4, 10-8 or 10-12 suitable for the thickness of the structural member) per bearing through the structural member into the interior panelfacer spaced  $9 \pm 1\frac{1}{2}$  in. [225  $\pm$  38 mm] from the center of each J-Clip and  $12 \pm 1\frac{1}{2}$  in. [300  $\pm$  38 mm] between Fab-Loks through holes predrilled with a 5/16 in. [7.9 mm] diameter drill bit.

Table note: Panels rated for Zone H may be used in Zones H and NH.  
NOREX-L, NOREX-H - Installed vertically or horizontally over steel structural member as indicated in the table above.



NOTE: ANY DESIGN CHANGE TO THE CLIP, THE JOINT, THE FASTENING METHOD OR THE INSULATION PROPERTIES MUST BE COMMUNICATED TO FM FOR APPROVAL.