



# ExSPACE™

OUTDOOR WALK-IN

THINK THE **[ BOX ]** OUTSIDE



# NORBEC STANDS OUT BY CONSTANTLY DEVELOPING INNOVATIVE SOLUTIONS TO MEET OUR CUSTOMER'S NEEDS.

THE SPACE AVAILABLE IN RESTAURANTS BECOMES INCREASINGLY LIMITED, WHILE THE COSTS ASSOCIATED TO EXPANSION AND RENOVATION ARE SIGNIFICANT. **NORBEC DEVELOPED AN OUTDOOR WALK-IN TO MEET THIS GROWING NEED.**



## “THINK THE BOX OUTSIDE”

- > The best solution allowing for interior space maximization.
- > The most cost-effective for new construction lay-outs.
  - > The ideal choice in the event of renovations or expansions.
- > Numerous features! The exterior cold room can be used as a refrigerator, a freezer and/or storage space, thus allowing for maximum space optimization.

## MANUFACTURED & INSTALLED TO MEET NORBEC'S HIGH STANDARDS

- > ExSPACE™ Outdoor Walk-Ins are manufactured to the customers specifications.
- > Turnkey installation by our authorized installer network.
- > Sturdy weather resistant construction.
- > Can be installed in most North American cities.
- > High-performance material selected to meet Norbec's high quality standards.



## GENERAL

- > The roof structure is built to support various snow loads and to ensure the waterproofness of the room.
- > Insulated floor (minimum 4 inches) in the refrigerators and freezers.
- > The exterior room may be adjacent to another building or independent (free standing).

## WHY A NORBEC OUTDOOR BOX ?

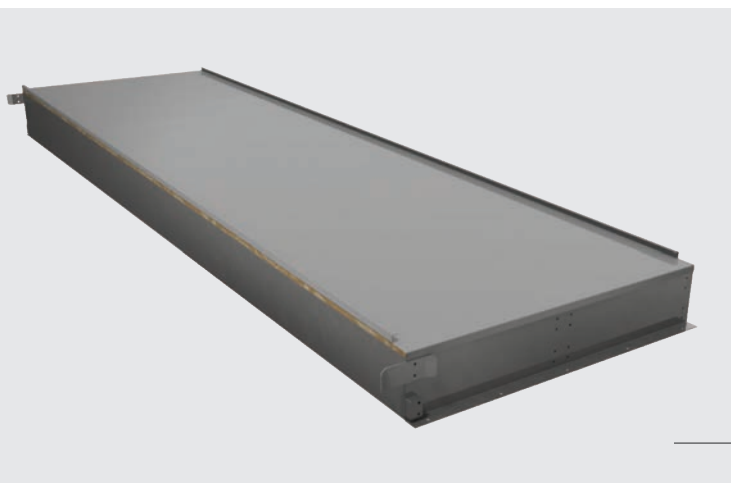
- > Compared with the price of an Indoor Walk-In, the building construction, material and labor, you can **Save more than 30% of the cost on a new build and more than 50% on renovations\*** when choosing an Outdoor Walk-In.
- > Avoid long delays and complications. Save money and **valuable space** by consolidating your cold storage projects with a trusted partner.

\*Indoor Walk-In + Brick & Construction



THE BEST SOLUTION TO MAXIMIZE SPACE AND MINIMIZE STORAGE COSTS.

## STRUCTURAL ROOF : MANUFACTURED TO MEET NORBEC'S HIGH STANDARDS



- > Structural "monoblock" roof made of steel beams
- > Structural panel reinforcement designed to support snow loads across North America
- > Easy to install fully assembled roof structure

## CAPACITY OF THE STRUCTURAL ROOF

| Depth of the cold room (ft.) | PSF (lb / ft <sup>2</sup> ) |
|------------------------------|-----------------------------|
| 8                            | 228                         |
| 9                            | 202                         |
| 10                           | 182                         |
| 11                           | 165                         |
| 12                           | 152                         |
| 13                           | 140                         |
| 14                           | 130                         |

Structural roof with a 1/4" per ft slope.

- Built to support snow loads

4" ou 5" Insulated ceiling

- Reduces the differential effect of the temperature
  - Energy-conserving

Ceiling anchorage - Reinforced Norbec camlock panels to transfer the compressive loads

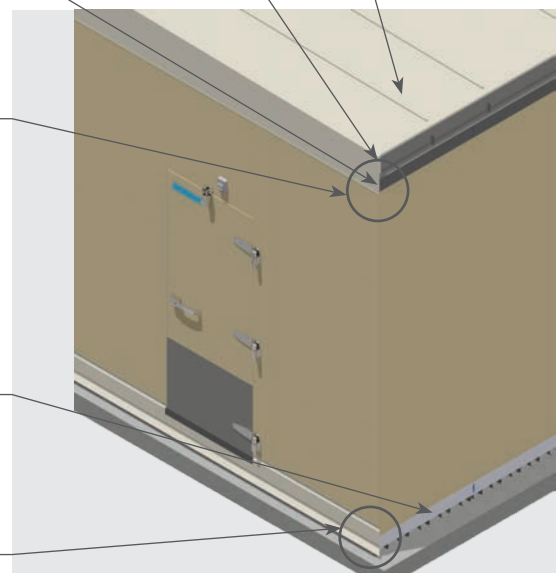
- Supports various snow loads
  - For an easy installation
- Provides high resistance to impact

Reinforced 2" wedge to transfer the load to the concrete slab

- Reinforces the structure
- Reduces premature wear of the concrete slab
  - Prevents standing water

Floor anchoring - reinforced floor

- Insures room stability
  - The Norbec standard
- Includes the finishing molding





SAVE MORE THAN 30% ON COST WHEN CHOOSING AN OUTDOOR WALK-IN.

## CONSTRUCTION

- > Polyurethane camlock panel
- > Minimum thickness of the insulation panels: 4" (R29 for 4".)
- > Maximum height of the supporting walls: 10'
- > Maximum depth of the cold room (limits of the structural roof): 14'
- > Thickness of the sheet of the supporting walls: 22 Cal.

## EXTERIOR DOOR

- > Weather stripping "semi-overlay" hinged doors equipped with a heating cable compressible on four sides.
- > Height (hinged door, 5' maximal width).
- > Kason branded hardware - high-strength and anti-theft.
- > Each handle system provided by NORBEC is equipped with a device allowing opening from the inside of the cold room, even if it is locked from the outside.

## FLOOR

### Floor composition

#### Standard

- > 2" wedge
- > 18 ga. Galvanized steel
- > 1/2' Plywood

### Floor options

- > Reinforced floor available
- > Non-slip floor

## EXTERIOR WALL FINISH & AVAILABLE COLORS

Our paint selection offers fluoropolymer finishes (PVDF). PVDF coating provides unique benefits including dirt and stain resistance, excellent overall adhesion and great flexibility.




### Standard finish

- > Smooth




### Different other options available

- > Embossed

### Standards Colors

-  Regal White 17-1651
-  Sandstone 17-1629
-  Charcoal 17-1625

### Different other colours available

-  Pewter 17-1626
-  Bright Silver 17-1627
-  Rigel II QC-9789

## AVAILABLE OPTIONS

- > D.E.L. Lights
- > Windows with integrated heating wire
- > Guard plates
  - stainless steel
  - galvanized steel
  - treadplate aluminum
- > Bumpers
- > Refrigeration
- > Extended warranty

## INSTALLATION

- > Modular structural roof for an easy on-site installation.
- > 36" width panels.
- > The cold room must be installed on a concrete floor slab with a flatness tolerance of 1/8" per feet.
- > No structural clip to the existing building required.
- > Outdoor refrigeration equipment available.
- > 2" floor spacers and 2" spacing between the main building and the Outdoor box to allow natural ventilation and prevent condensation.
- > We provide complete finishing and installation moulding.

## NORBEC YOUR PARTNER OF CHOICE FOR WALK-INS

FOR OVER 35 YEARS, NORBEC CONTINUES TO INNOVATE AND DELIVER HIGH QUALITY PRODUCTS DESIGNED TO MEET OUR CLIENTS' NEEDS.



OUR TEAM IS COMMITTED TO DELIVER ON TIME AND PROVIDE UNPARALLELED TECHNICAL SUPPORT.

**NORBEC**<sup>™</sup>



---

**Systèmes Norbec Inc. | 97, de Vaudreuil Street, Boucherville (Qc) J4B 1K7 | 1 877 667-2321**

For more information on our products, please visit our website at [norbec.com](http://norbec.com).

To order your parts online and get information related to them,  
please visit <https://shop.norbec.com/Magasin/en>.