



CJMRC.R25807 Units, Partition Panel

[Page Bottom](#)

Units, Partition Panel

[See General Information for Units, Partition Panel](#)

NORBEC ARCHITECTURAL

R25807

97 DE VAUDREUIL

BOUCHERVILLE, QC J4B 1K7 CANADA

Prefabricated building panel, designated as "NOROC-L", for use in Design No. W023.

[Last Updated](#) on 2009-07-29

[Questions?](#)

[Print this page](#)

[Notice of Disclaimer](#)

[Page Top](#)

[Copyright © 2010 Underwriters Laboratories of Canada Inc.](#)

The appearance of a company's name or product in this database does not in itself assure that products so identified have been manufactured under ULC's Follow-Up Service. Only those products bearing the ULC Mark should be considered to be Listed and covered under ULC's Follow-Up Service. Always look for the Mark on the product.

ULC permits the reproduction of the material contained in the ULC Online Directories subject to the following conditions: 1. The Guide Information, Designs and/or Listings (files) must be presented in their entirety and in a non-misleading manner, without any manipulation of the data (or drawings). 2. The statement "Reprinted from the ULC Online Directories with permission from Underwriters Laboratories of Canada Inc." must appear adjacent to the extracted material. In addition, the reprinted material must include a copyright notice in the following format: "Copyright © 2010 Underwriters Laboratories of Canada Inc."

An independent organization working for a safer world with integrity, precision and knowledge.



BXUVC.W023 Fire Resistance Ratings

[Page Bottom](#)

Fire Resistance Ratings

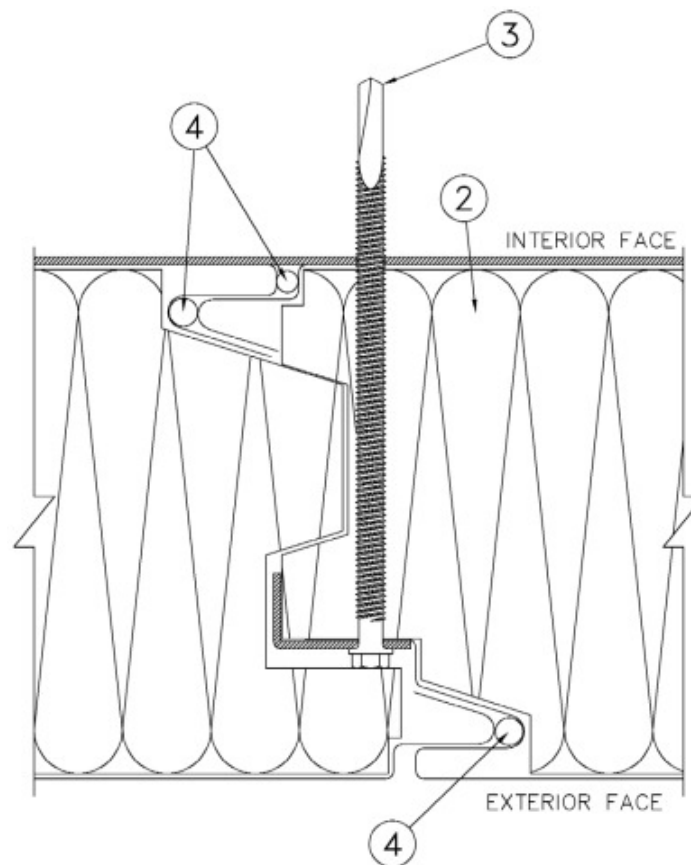
[See General Information for Fire Resistance Ratings](#)

Design No. W023

June 30, 2010

Assembly Rating — 45 min, 1 h, and 2 h (See Item 2)

Non-Bearing Wall



1. **Floor and Ceiling Fastening** — (Not Shown, when installed as an interior partition) — Channel shaped, fabricated from min 1.5 mm thick, corrosion-protected steel, min width to accommodate panel thickness, with min 35 mm long legs, attached to floor and ceiling with fasteners spaced 600 mm OC, attached on both sides of wall to partition panels with fasteners spaced 405 mm OC.

OR

75 mm x 75 mm steel angles, fabricated from min 1.5 mm thick corrosion-protected steel, on both sides of wall, attached to floor and ceiling with fasteners 405 mm OC max, attached on both sides of wall to partition panels with fasteners spaced 405 mm OC.

- **2. Partition Panel Units** — CJMRC (Guide No. 40 U18.16). Prefabricated, steel skinned, mineral wool core building panels, 100 - 152 mm thick.

| Rating | Panel Thickness |
|--------|-----------------|
| 45 min | 100 mm |
| 1 h | 127 mm |
| 2 h | 152 mm |

Panels secured to structural steel using self-drilling, self-tapping screws. Installed as per the manufacturer's installation instructions.

NORBEC ARCHITECTURAL — NOROC-L

- **3. Fasteners** — 6 mm-28, self-drilling, self-tapping steel screws and prefabricated steel angles used to connect panels to structural steel. Fastener to be of sufficient length to engage the structural steel. Installed as per the manufacturer's installation instructions. Minimum of one fastener and plate at every location where the panel intersects with structural steel.

- **4 Caulking Compound** — (Optional) — 6 mm diameter bead of silicone sealant applied to the interior joint after assembly. 6 mm diameter bead of butyl sealant applied to the female half of joints by the manufacturer.

Last Updated on 2010-06-30

[Questions?](#)

[Print this page](#)

[Notice of Disclaimer](#)

[Page Top](#)

Copyright © 2010 Underwriters Laboratories of Canada Inc.

The appearance of a company's name or product in this database does not in itself assure that products so identified have been manufactured under ULC's Follow-Up Service. Only those products bearing the ULC Mark should be considered to be Listed and covered under ULC's Follow-Up Service. Always look for the Mark on the product.

ULC permits the reproduction of the material contained in the ULC Online Directories subject to the following conditions: 1. The Guide Information, Designs and/or Listings (files) must be presented in their entirety and in a non-misleading manner, without any manipulation of the data (or drawings). 2. The statement "Reprinted from the ULC Online Directories with permission from Underwriters Laboratories of Canada Inc." must appear adjacent to the extracted material. In addition, the reprinted material must include a copyright notice in the following format: "Copyright © 2010 Underwriters Laboratories of Canada Inc."

An independent organization working for a safer world with integrity, precision and knowledge.

