

**CJMR.R25807
Units, Partition Panel**[Page Bottom](#)

Units, Partition Panel[See General Information for Units, Partition Panel](#)**NORBEC ARCHITECTURAL**

R25807

97 DE VAUDREUIL

BOUCHERVILLE, QC J4B 1K7 CANADA

Prefabricated building panel, designated as "NOROC-L", for use in Design No. [U062](#).

See UL Fire Resistance Directory for illustrations of designs and fire resistance classifications.

[Last Updated](#) on 2009-07-29

[Questions?](#)[Print this page](#)[Notice of Disclaimer](#)[Page Top](#)

[Copyright © 2010 Underwriters Laboratories Inc.®](#)

The appearance of a company's name or product in this database does not in itself assure that products so identified have been manufactured under UL's Follow-Up Service. Only those products bearing the UL Mark should be considered to be Listed and covered under UL's Follow-Up Service. Always look for the Mark on the product.

UL permits the reproduction of the material contained in the Online Certification Directory subject to the following conditions: 1. The Guide Information, Designs and/or Listings (files) must be presented in their entirety and in a non-misleading manner, without any manipulation of the data (or drawings). 2. The statement "Reprinted from the Online Certifications Directory with permission from Underwriters Laboratories Inc." must appear adjacent to the extracted material. In addition, the reprinted material must include a copyright notice in the following format: "Copyright © 2010 Underwriters Laboratories Inc.®"

An independent organization working for a safer world with integrity, precision and knowledge.





BXUV.U062 Fire Resistance Ratings - ANSI/UL 263

[Page Bottom](#)

Design/System/Construction/Assembly Usage Disclaimer

- Authorities Having Jurisdiction should be consulted in all cases as to the particular requirements covering the installation and use of UL Listed or Classified products, equipment, system, devices, and materials.
 - Authorities Having Jurisdiction should be consulted before construction.
 - Fire resistance assemblies and products are developed by the design submitter and have been investigated by UL for compliance with applicable requirements. The published information cannot always address every construction nuance encountered in the field.
 - When field issues arise, it is recommended the first contact for assistance be the technical service staff provided by the product manufacturer noted for the design. Users of fire resistance assemblies are advised to consult the general Guide Information for each product category and each group of assemblies. The Guide Information includes specifics concerning alternate materials and alternate methods of construction.
 - Only products which bear UL's Mark are considered as Classified, Listed, or Recognized.
-

Fire Resistance Ratings - ANSI/UL 263

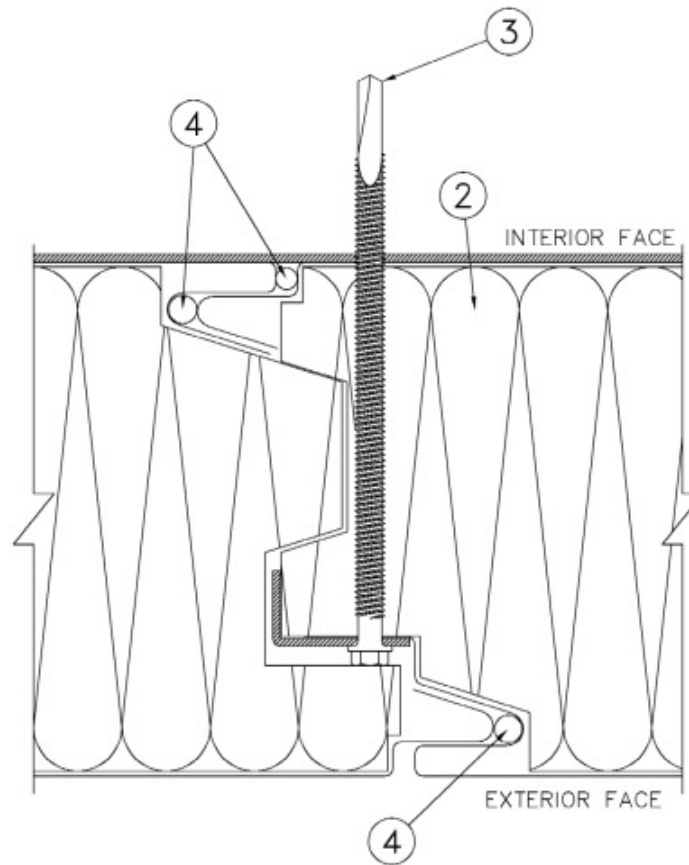
[See General Information for Fire Resistance Ratings - ANSI/UL 263](#)

Design No. U062

June 30, 2010

Assembly Rating — 45 min, 1 Hr, and 2 Hr (See Item 2)

Nonbearing Wall



1. **Floor and Ceiling Fastening** — (Not Shown, when installed as an interior partition) — Channel shaped, fabricated from min 16 MSG corrosion-protected steel, min width to accommodate panel thickness, with min 1-1/2 in. long legs, attached to floor and ceiling with fasteners 24 in. OC max, attached on both sides of wall to partition panels with fasteners spaced 16 in. OC.

OR

3 in. x 3 in. steel angles, fabricated from min 16 MSG corrosion-protected steel, on both sides of wall, attached to floor and ceiling with fasteners 16 in. OC max, attached on both sides of wall to partition panels with fasteners spaced 16 in. OC.

2. **Partition Panel Units*** — Prefabricated, steel skinned, mineral wool core building panels, 4 - 6 in. thick.

Assembly Rating	Panel Thickness
45 min	4 in.
1 hr	5 in.
2 hr	6 in.

Panels secured to structural steel using self-drilling, self-tapping screws. Installed as per the manufacturer's installation instructions.

NORBEC ARCHITECTURAL — NOROC-L

3. **Fasteners** — ¼ in.-28, self-drilling, self-tapping steel screws and prefabricated steel angles used to connect panels to structural steel. Fastener to be of sufficient length to engage the structural steel. Installed as per the manufacturer's installation instructions. Minimum of one fastener and plate at every location where the panel intersects with structural steel.

4. **Caulking Compound** — (Optional) — ¼ inch diameter bead of silicone sealant applied to the interior joint after assembly. ¼ inch diameter wide bead of butyl sealant applied to the female half of joints by the manufacturer.

*Bearing the UL Classification Mark

Last Updated on 2010-06-30

[Questions?](#)[Print this page](#)[Notice of Disclaimer](#)[Page Top](#)

[Copyright © 2010 Underwriters Laboratories Inc.®](#)

The appearance of a company's name or product in this database does not in itself assure that products so identified have been manufactured under UL's Follow-Up Service. Only those products bearing the UL Mark should be considered to be Listed and covered under UL's Follow-Up Service. Always look for the Mark on the product.

UL permits the reproduction of the material contained in the Online Certification Directory subject to the following conditions: 1. The Guide Information, Designs and/or Listings (files) must be presented in their entirety and in a non-misleading manner, without any manipulation of the data (or drawings). 2. The statement "Reprinted from the Online Certifications Directory with permission from Underwriters Laboratories Inc." must appear adjacent to the extracted material. In addition, the reprinted material must include a copyright notice in the following format: "Copyright © 2010 Underwriters Laboratories Inc.®"

An independent organization working for a safer world with integrity, precision and knowledge.

