



## TGYVC.R25807 Roof Deck Construction Materials

[Page Bottom](#)

### Roof Deck Construction Materials

[See General Information for Roof Deck Construction Materials](#)

#### NORBEC ARCHITECTURAL

R25807

97 DE VAUDREUIL

BOUCHERVILLE, QC J4B 1K7 CANADA

Composite panel, "NOREX-L", with 150 mm thick polyisocyanurate foamed plastic core (maximum); panels installed on the interior or exterior of building, fastened to purlins spaced at 3660 mm OC (maximum) for use in Construction No. C49.

Composite panel, "NOROC-L", with 150 mm thick mineral wool core (maximum); panels installed on the interior or exterior of building, fastened to purlins spaced at 3660 mm OC (maximum) for use in Construction No. C49.

Composite panel, "NOREX-S", with 127 mm thick polyisocyanurate foamed plastic core (maximum); panels installed on the interior or exterior of building, fastened to purlins spaced at 3660 mm OC (maximum) for use in Construction No. C50.

Composite panel, "NOREX-H", with 100 mm thick polyisocyanurate foamed plastic core (maximum); panels installed on the interior or exterior of building, fastened to purlins spaced at 3660 mm OC (maximum) for use in Construction No. C51.

[Last Updated](#) on 2010-06-15

[Questions?](#)

[Print this page](#)

[Notice of Disclaimer](#)

[Page Top](#)

[Copyright © 2010 Underwriters Laboratories of Canada Inc.](#)

The appearance of a company's name or product in this database does not in itself assure that products so identified have been manufactured under ULC's Follow-Up Service. Only those products bearing the ULC Mark should be considered to be Listed and covered under ULC's Follow-Up Service. Always look for the Mark on the product.

ULC permits the reproduction of the material contained in the ULC Online Directories subject to the following conditions: 1. The Guide Information, Designs and/or Listings (files) must be presented in their entirety and in a non-misleading manner, without any manipulation of the data (or drawings). 2. The statement "Reprinted from the ULC Online Directories with permission from Underwriters Laboratories of Canada Inc." must appear adjacent to the extracted material. In addition, the reprinted material must include a copyright notice in the following format: "Copyright © 2010 Underwriters Laboratories of Canada Inc."

An independent organization working for a safer world with integrity, precision and knowledge.



**TGKXC.C49**  
**Roof Deck Constructions**

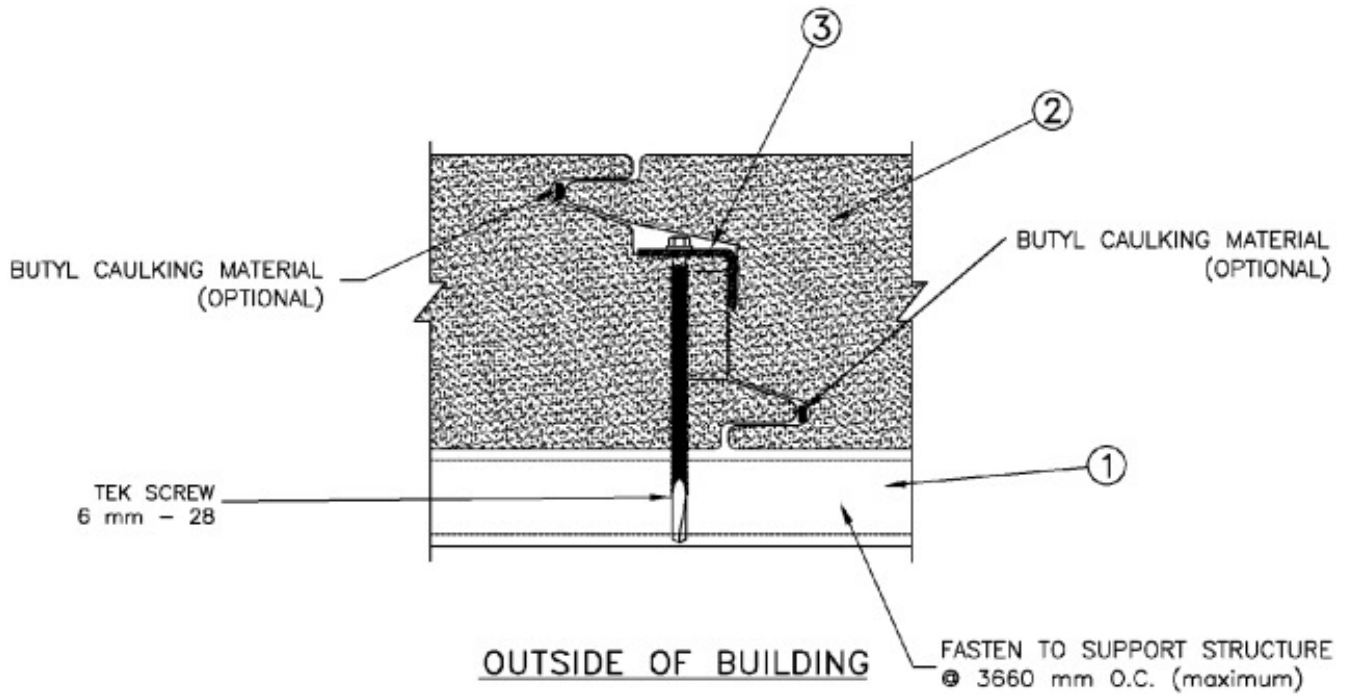
[Page Bottom](#)

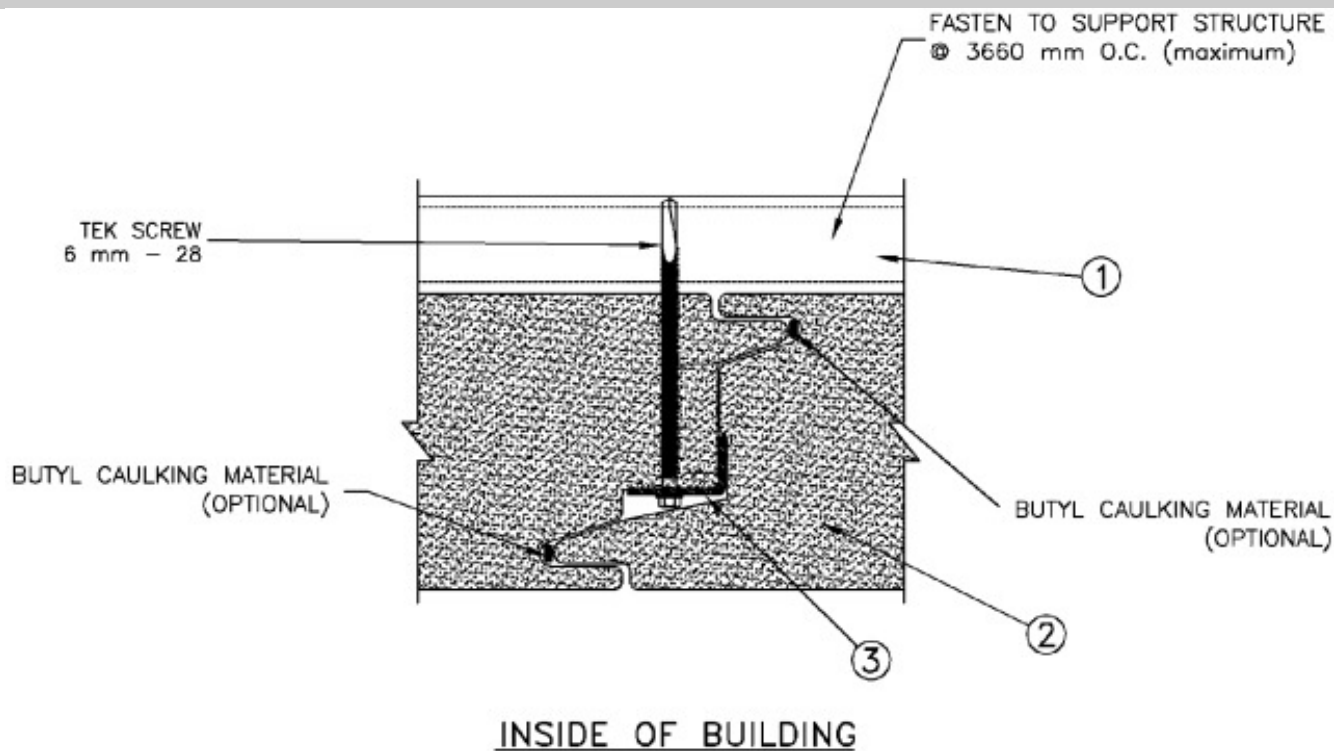
**Roof Deck Constructions**

[See General Information for Roof Deck Constructions](#)

**Construction No. C49**

July 29, 2009





1. **Supports** — Structural steel spaced at 3660 mm OC maximum or other materials acceptable to authorities having jurisdiction.

• 2. **Roof Panel** — Composite panels having a maximum thickness of 150 mm. Panels fastened with manufacturer's fastening hardware to supports. Listed by ULC under Roof Deck Construction Materials, TGYVC (Guide No. 360 R13), for the following manufacturer.

**NORBEC ARCHITECTURAL** — NOREX-L

3. **Fasteners** — 6 mm - 28, self-drilling, self-tapping steel screws and prefabricated steel angles used to connect panels to structural steel. Installed as per the manufacturer's installation instructions. Minimum of one fastener and angle at every location where the panel intersects with structural steel.

[Last Updated](#) on 2009-07-29

[Questions?](#)

[Notice of Disclaimer](#)

[Page Top](#)

[Copyright © 2009 Underwriters' Laboratories of Canada®](#)

The appearance of a company's name or product in this database does not in itself assure that products so identified have been manufactured under ULC's Follow-Up Service. Only those products bearing the ULC Mark should be considered to be Listed and covered under ULC's Follow-Up Service. Always look for the Mark on the product.

ULC permits the reproduction of the material contained in the Online Certifications Directory subject to the following conditions: 1. The Guide Information, Designs and/or Listings (files) must be presented in their entirety and in a non-misleading manner, without any manipulation of the data (or drawings). 2. The statement "Reprinted from the Online Certifications Directory with permission from Underwriters Laboratories of Canada" must appear adjacent to the extracted material. In addition, the reprinted material must include a copyright notice in the following format: "Copyright © 2009 Underwriters Laboratories of Canada®"