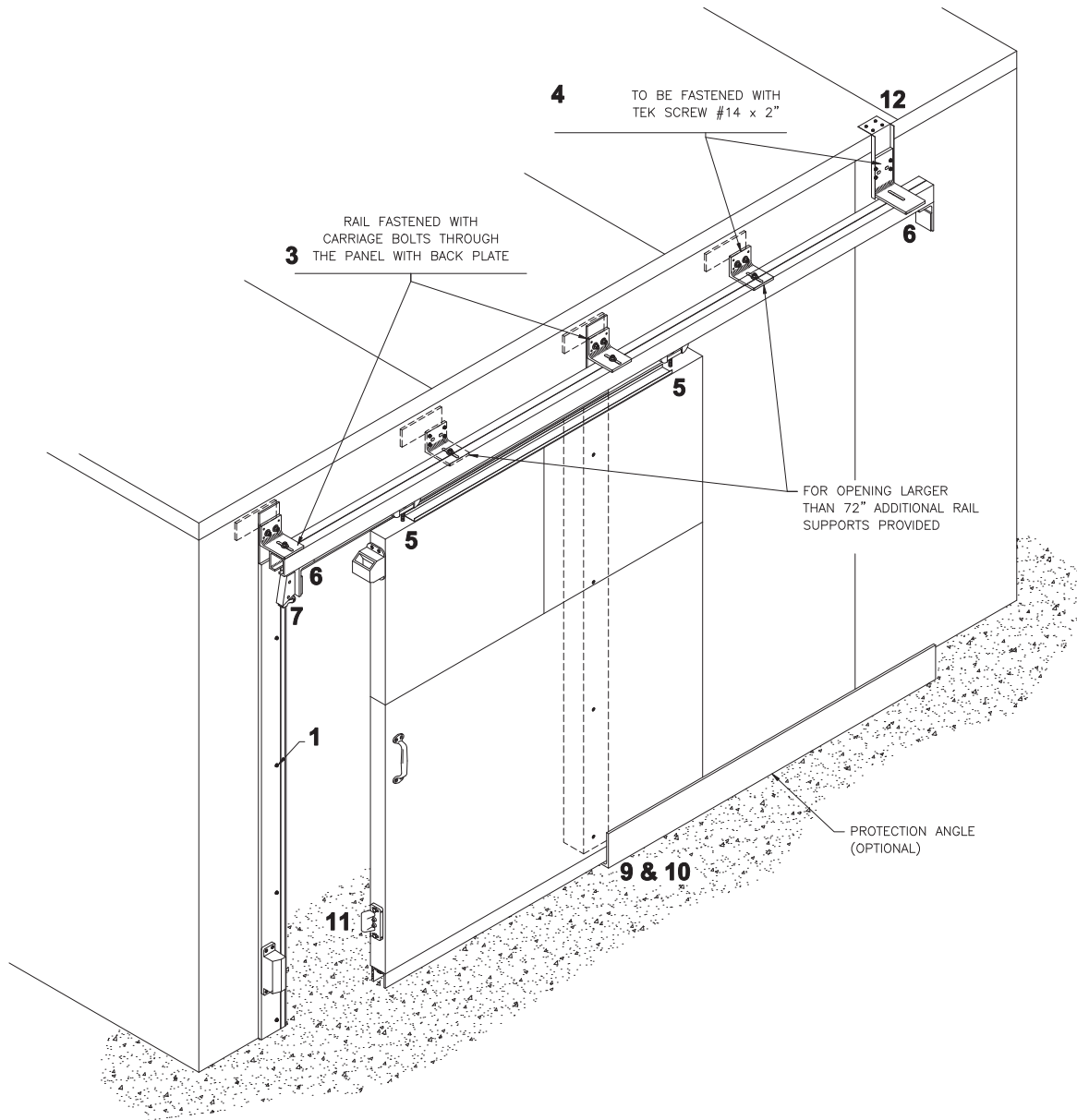
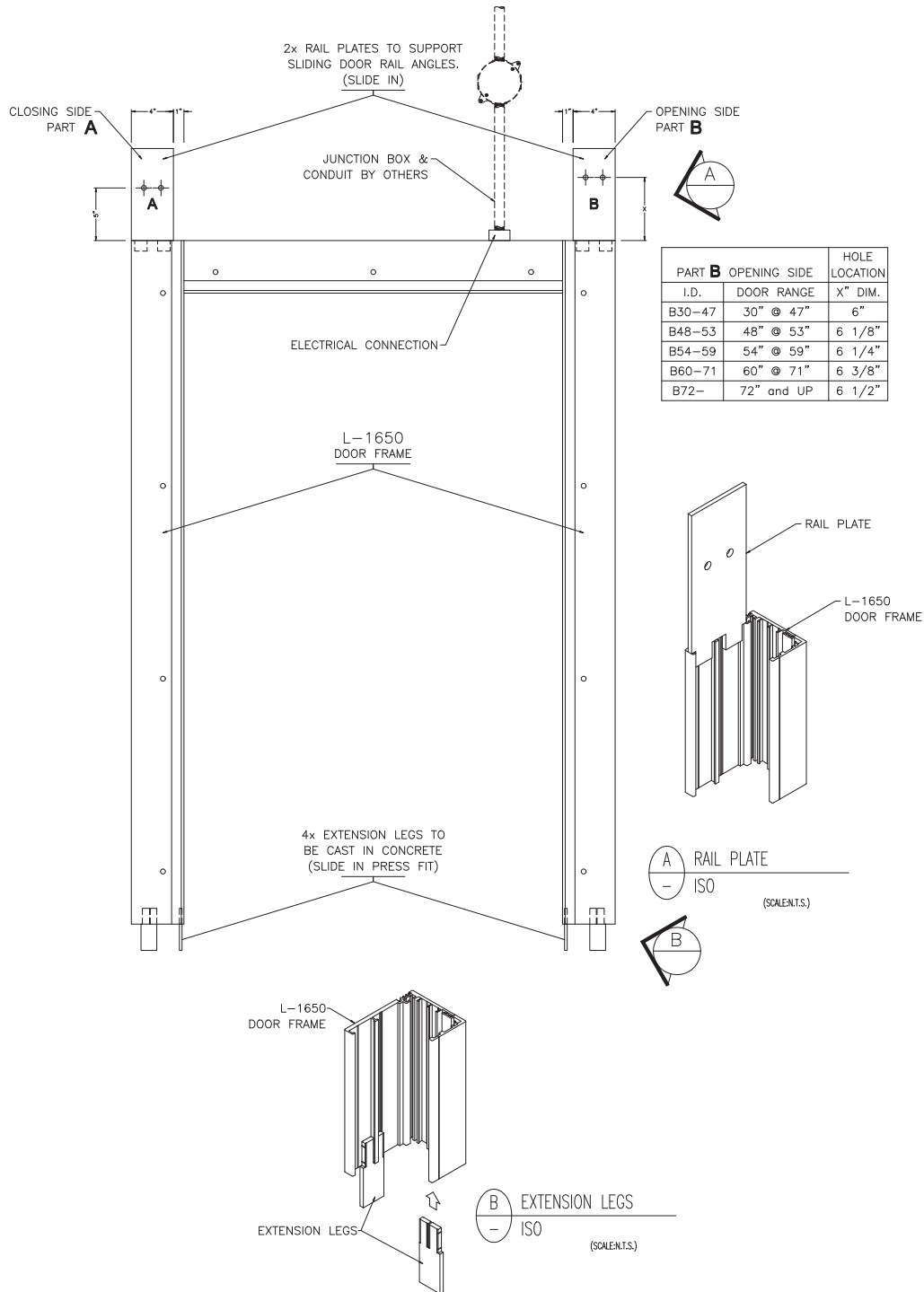


CL-1650 SLIDING DOOR INSTALLATION GUIDE

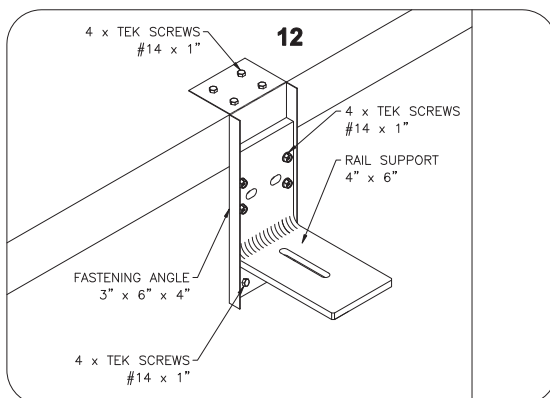
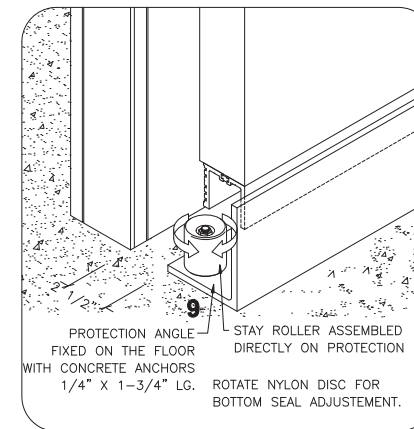
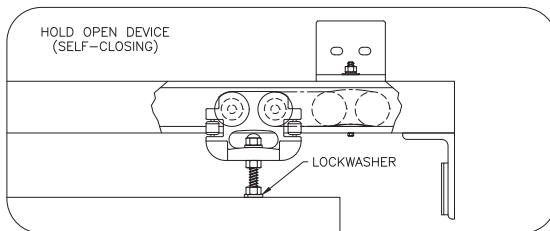
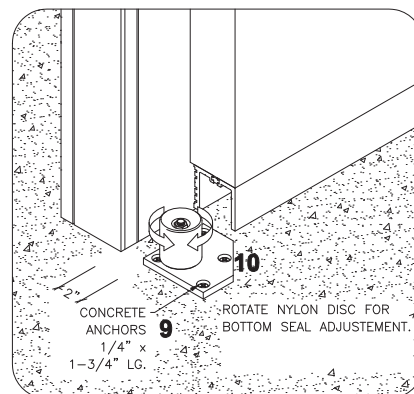
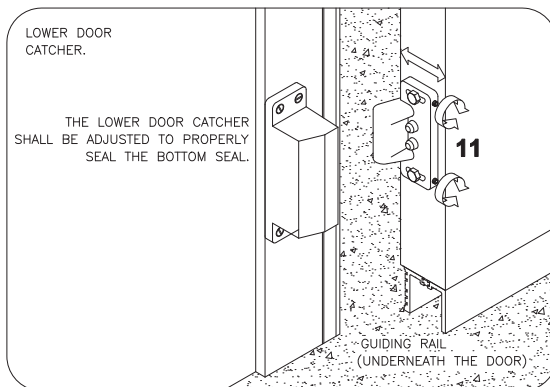
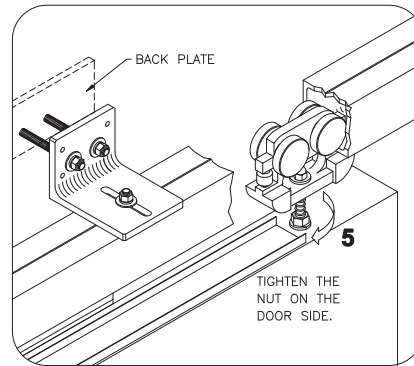
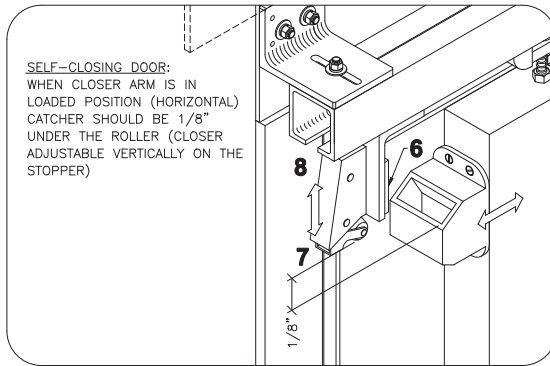


****NOTE:**
FOR INSTALLATION ON PANELS
WITHOUT REINFORCEMENT THE
RAIL SUPPORT MUST BE FASTENED
WITH CARRIAGE BOLTS THROUGH
THE PANEL WITH ALUMINIUM
BACK PLATE

CL-1650 SLIDING DOOR INSTALLATION GUIDE



CL-1650 SLIDING DOOR INSTALLATION GUIDE



CL-1650 SLIDING DOOR INSTALLATION GUIDE

NOTE: In order to perform a proper installation of the sliding door, all steps must be followed in the sequence described below. The following instructions refer to the drawing attached.

- 1° Fasten the aluminum door frame (L-1650) on the side panels (1) with carriage bolts.
- 2° Fasten the door rail on both sides of frame (3) with carriage bolts through the Panel with the supplied back plates. Holes for the bolts are factories located On the aluminium frame to provide a slight slope on the rail.
- 3° Fasten the remaining rail support (4) on the reinforced side panel(s) with TEK SCREW #14 x 2".
- 4° Slide trolleys in the rail (5) and insert trolley bolts on top of door panel Level door and adjust it's height so that bottom of door is at 1/2" of floor, when door is closed. Afterward, make sure that 1/2" locking nuts on trolleys are tightened on door (not on trolley).
- 5° In closed position, door should overlap its frame of 2" on each side. In open position, door should clear the opening by 1". Adjust the two door stoppers (6) accordingly. **NOTE:** If door is supplied with a door closer, make sure that the arm of closer is in loaded position (pointing toward the door) before closing the door and adjust the stopper.
- 6° If included with door, adjust the door closer vertically so that the roller (7) clears the closer-catcher of 1/8" (refer to drawing).
- 7° Fasten the stay roller on floor with concrete anchors 1/4" x 1 3/4", as per sketch attached (9).
- 8° To adjust door seals, slide door in closed position. Loosen all bolts holding the rail to rail supports and move rail toward the door frame until the gasket, located on top of door is compressed of 1/8". Then, tighten only the bolts of supports located on each sides of door opening.
- 9° Rotate stay roller (10) on floor so that the gasket located at the bottom sides of door is compressed of 1/8", when door is closed. The lower door catcher (11) shall be adjusted properly to seal the handle side.
- 10° Since bottom seal adjustment may have an effect on the top seal adjustment and vice-versa, it might be necessary to perform sequences 8 and 9 again to set the final adjustment.
- 11° After top and bottom seals are all set, tighten all remaining loose supports on rail.

SELF CLOSING DOORS ONLY:

- 12° If door closes too fast or too slow, it can be compensated by having the top gasket to rub more or less on frame (rail adjustment).
- 13° In order to suit various sites condition, the bottom wiper gasket are supplied a little longer. To reduce friction on floor and improve door operation, this gasket might need to be trimmed on site.