

# NORBEC™

## INSTRUCTIONS FOR HEATER CABLE REPLACEMENT

---

### 1. INTEGRATED DOOR FRAME OR TYPE « L » (Diagram: 1, 2, 3, & 4, 8, 9 & 10)

**ATTENTION: PRIOR TO BEGINNING HEATER CABLE REPLACEMENT!**

**MAKE SURE YOU HAVE TURNED OFF THE ELECTRICAL SUPPLY CIRCUIT AND DISCONNECTED THE WIRE FROM THE JUNCTION BOX.**

**(SOMETIMES THE WIRE IS CONNECTED WITH THE HEATED VENT AND THE LIGHT)**

- 1.1 On the outside of the door frame, remove the black neoprene gasket holding the cap heater, around the edge of the frame.



- 1.2 Remove the cap heater from the frame.



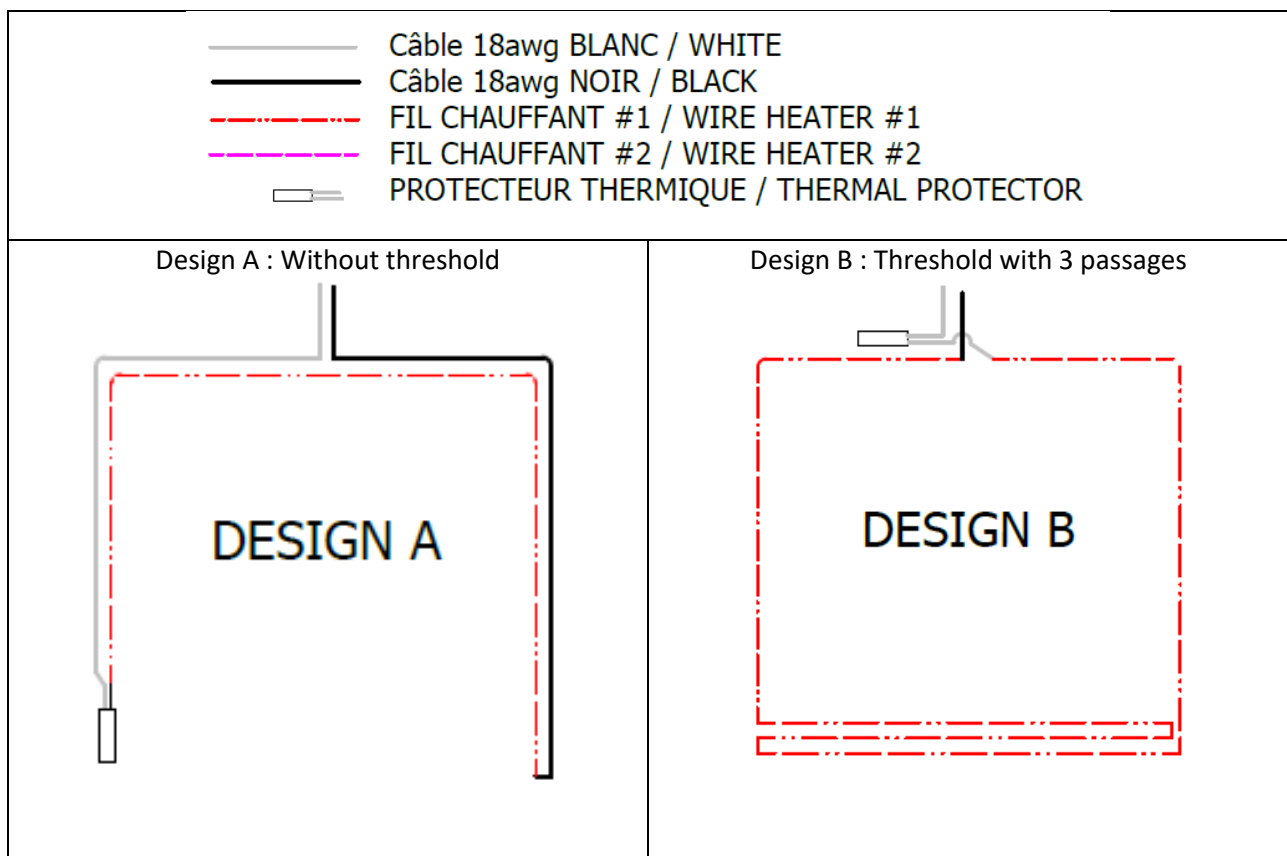
# NORBEC™

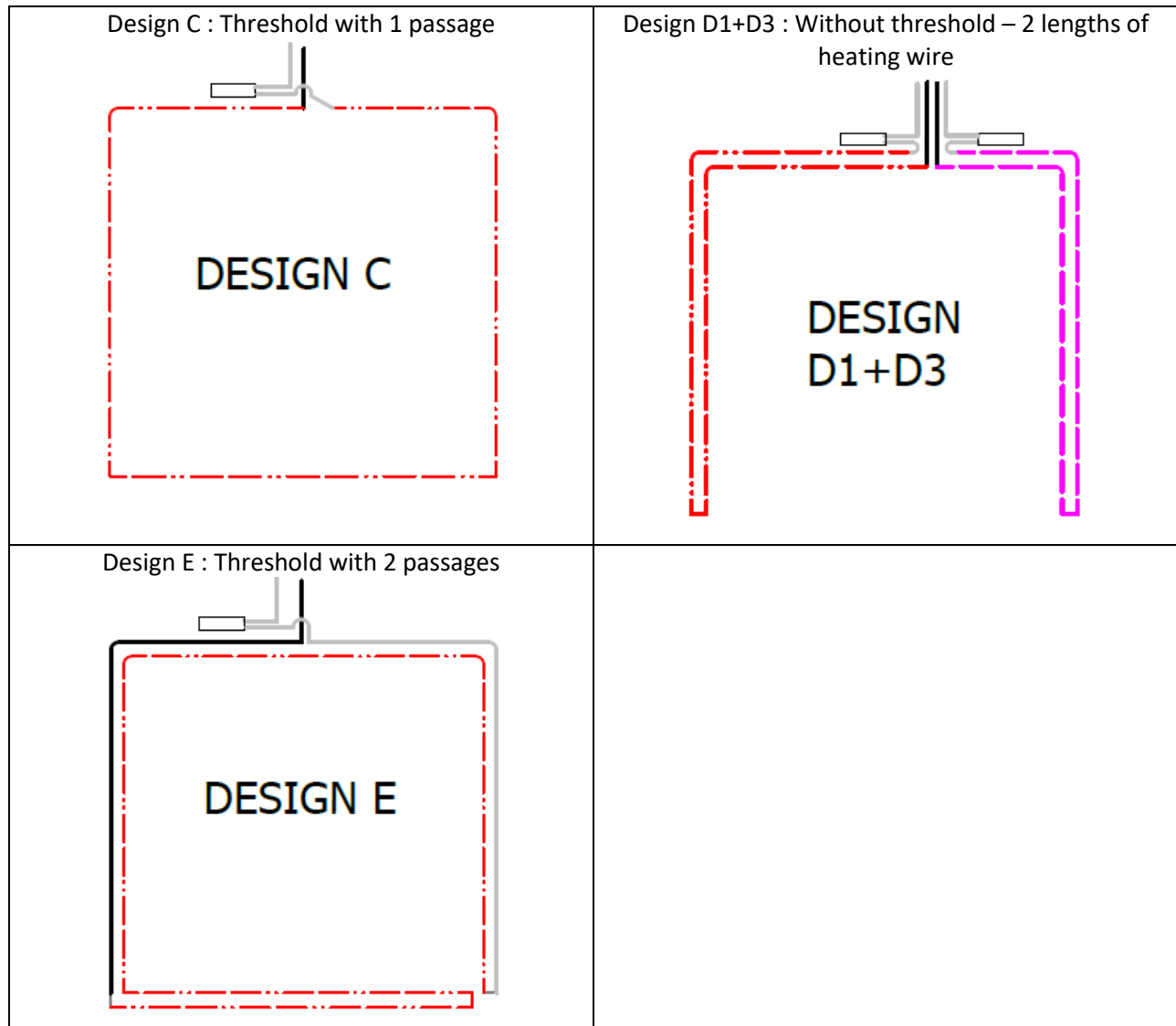
## INSTRUCTIONS FOR HEATER CABLE REPLACEMENT

1.3 Unscrew and remove the cap heater from the threshold if there is a threshold.



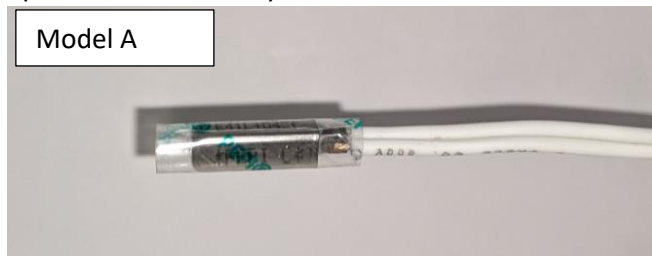
1.4 Remove the existing heater cable, noting which configuration it is connected to.



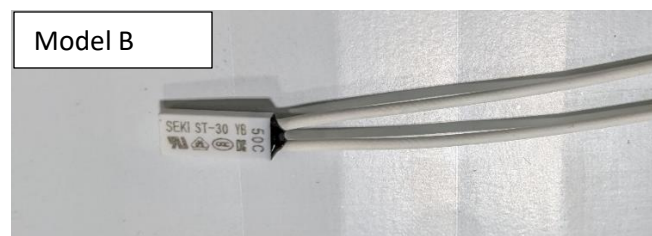


1.5 Remove the thermal protector if there any.

Model A



Model B



## INSTRUCTIONS FOR HEATER CABLE REPLACEMENT

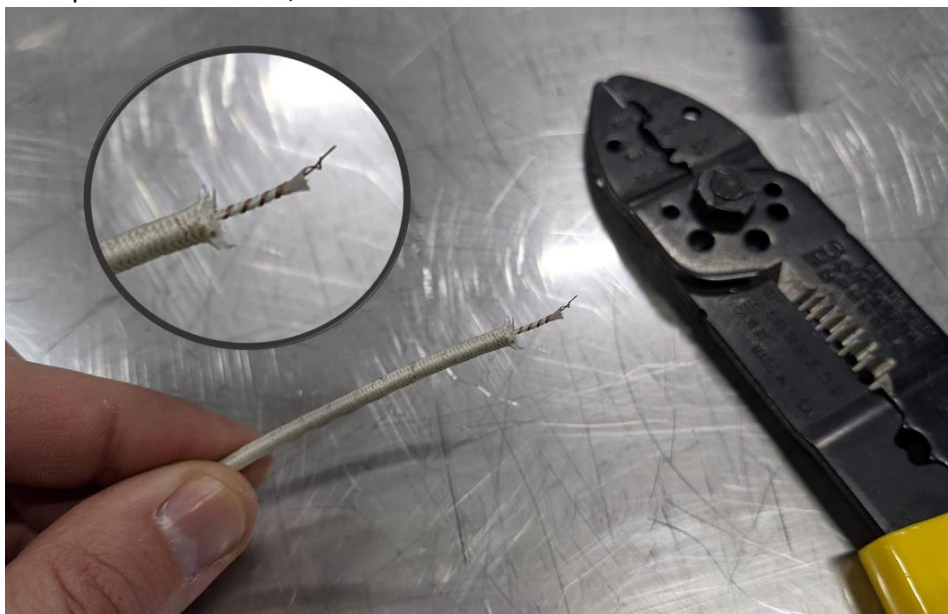
### 1.6 Replace the heater cable with the new one supplied by Norbec.

Take care that the heater cable is not cut or damaged when it is inserted into the grooves of the frame.

The heater cable should remain right groove. (See view of sections in the appendix of this document).

Never connect the heater cable directly to the junction box, you must use the connection wire (White & Black) provided and then plug them into the box.

#### 1.6.1 Strip the heater cable, it must remain twisted.



#### 1.6.2 Strip the connection wire.





## INSTRUCTIONS FOR HEATER CABLE REPLACEMENT

- 1.6.3 Insert the heat shrink tube and crimp the butt connector with the stripped ends.



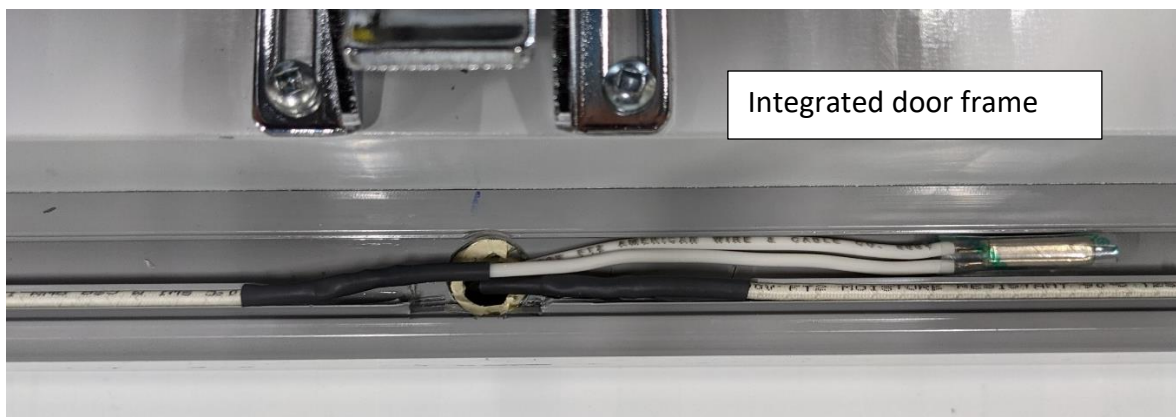
- 1.6.4 Heat the heat shrink tube over the connector.

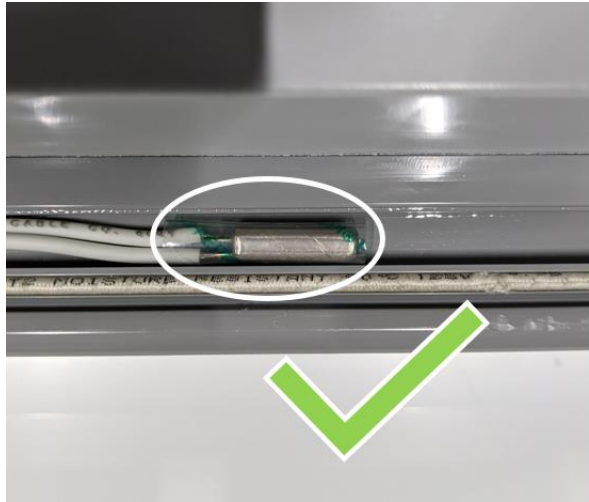


- 1.7 Replace the thermal protector, if there was originally one and connect it in series with the new heater cable.

The thermal protector must always have the transparent protective sleeve.

It must be in the vertical position, so it is in contact with the cap heater without touching the heating cable. (See diagram #1)





- 1.8 Put the cap heater back in place with the neoprene gasket.  
If needed add clear silicone under the gasket to make sure it stays in place.
- 1.9 Reconnect the connection wires (White & Black) of the heater cable in the junction box and turn the power back on.



## INSTRUCTIONS FOR HEATER CABLE REPLACEMENT

### 2 INTEGRATED THRESHOLD OR SURFACE (Diagram: 5, 6 & 7)

**ATTENTION: PRIOR TO BEGINNING HEATER CABLE REPLACEMENT!**

**MAKE SURE YOU HAVE TURNED OFF THE ELECTRICAL SUPPLY CIRCUIT AND DISCONNECTED THE WIRE FROM THE JUNCTION BOX.**

**(SOMETIMES THE WIRE IS CONNECTED WITH THE HEATED VENT AND THE LIGHT)**

- 2.1 Unscrew and remove the cap heater which is located on the top of the threshold.
- 2.2 Replace the heater cable with the new one supplied by Norbec.  
Take care that the heater cable is not cut or damaged when it is inserted into the grooves of the frame.
- 2.3 Replace the cap heater on top of the threshold.
- 2.4 Reconnect the connection wires (White & Black) of the heating cable in the junction box and turn the power back on.



## INSTRUCTIONS FOR HEATER CABLE REPLACEMENT

### 3 WOOD DOOR FRAME (Diagram: 8 & 9) DISCONTINUED.

**ATTENTION: PRIOR TO BEGINNING HEATER CABLE REPLACEMENT!**

**MAKE SURE YOU HAVE TURNED OFF THE ELECTRICAL SUPPLY CIRCUIT AND DISCONNECTED THE WIRE FROM THE JUNCTION BOX.**

**(SOMETIMES THE WIRE IS CONNECTED WITH THE HEATED VENT AND THE LIGHT)**

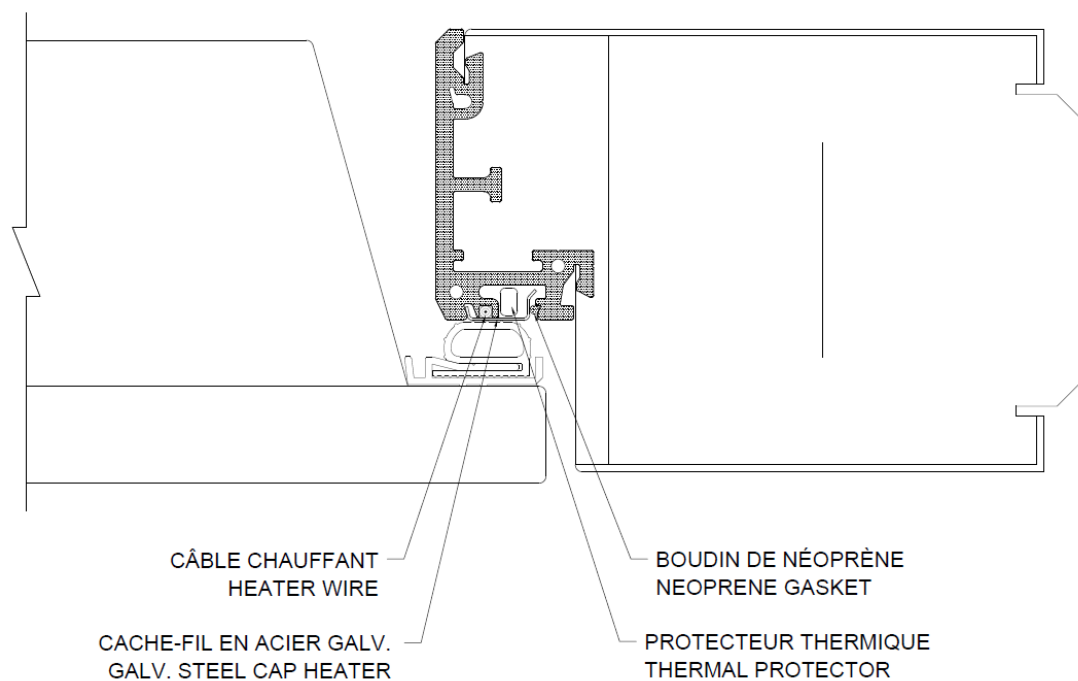
- 3.1 Unscrew and remove the cap heater.
- 3.2 Remove the existing heater cable which is covered with aluminium tape.
- 3.3 The heater cable must never be in direct contact with a wood surface.  
For installation on a wooden frame:
  - 3.3.1 Insulate the surface by covering it with insulating tape (asbestos) covered with an aluminum tape.
  - 3.3.2 Place the cable on the aluminum tape.
  - 3.3.3 Cover the heater cable with another layer of aluminum tape.
- 3.4 Replace the cap heater.
- 3.5 Reconnect the connection wires (White & Black) of the heater cable in the junction box and turn the power back on.

### **IMPORTANT NOTES**

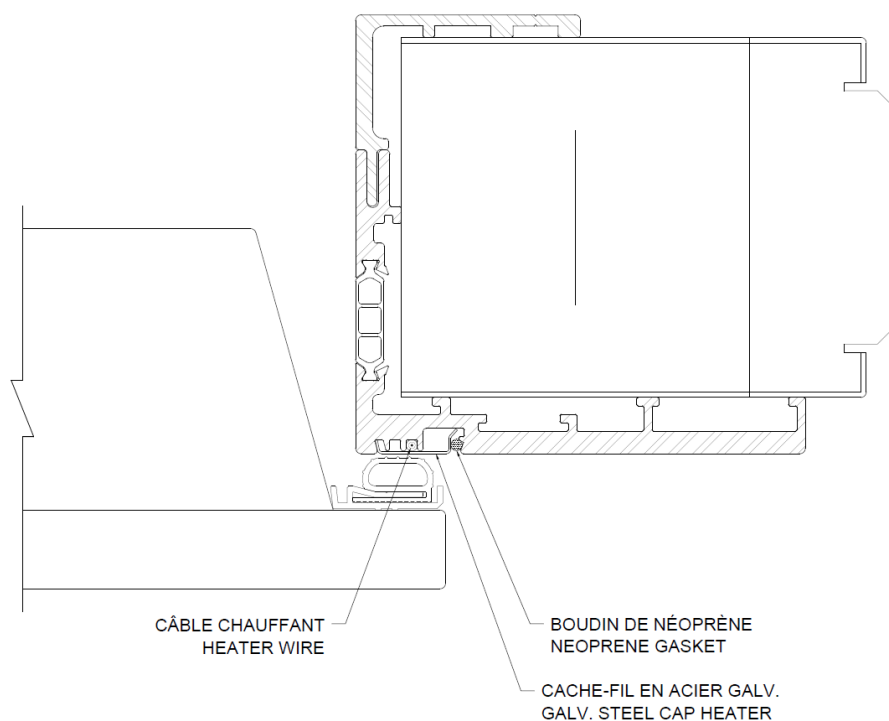
- **NOTE A:** The power of the heater cable is defined by its length, so it is important to respect the length of cut suggested by Norbec. Never cut more than 12 inches from the suggested length cable. Removing more than 12 inches alters the cable electrical resistance property and the cable may overheat. The length received on site may be longer than the suggested length.
- **NOTE B:** Never restore the power to the heater cable before installation has been fully completed otherwise the cable will burn instantly.
- **NOTE C:** Never connect the heater cable directly to the junction box, you must use the connection wire (White & Black) provided and then plug them into the box.
- **NOTE D:** Heater cable must never overlap or touch one another as they will burn out each.



### **DIAGRAM #1 : P-340 DOOR FRAME**

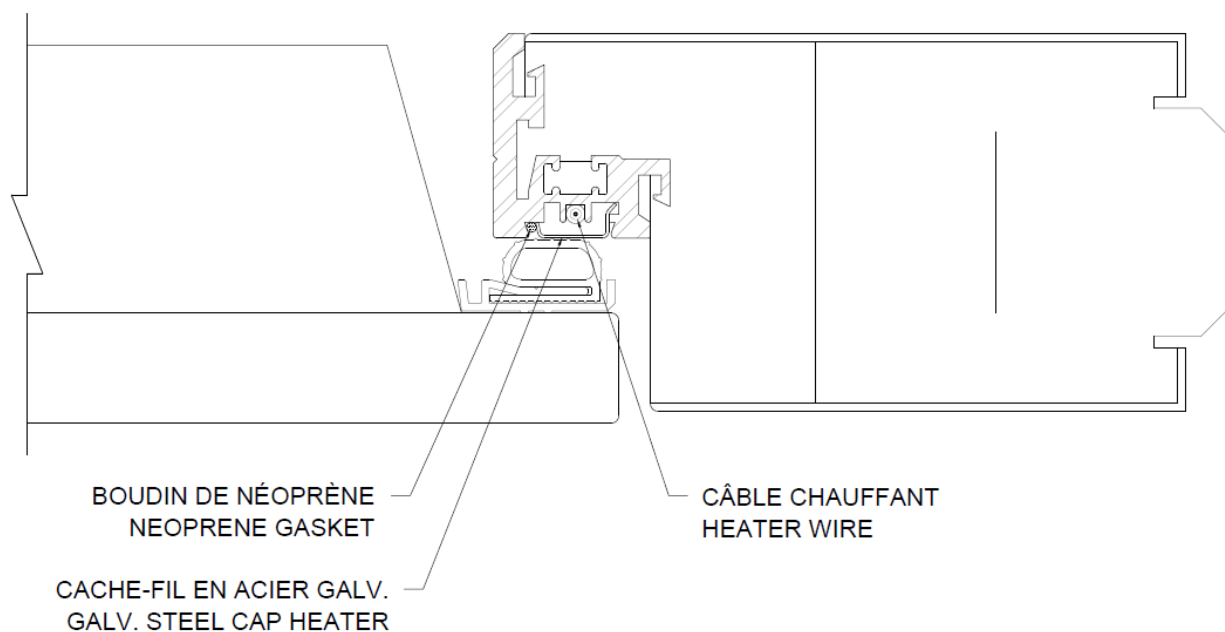


### **DIAGRAM #2 : L-1750 DOOR FRAME**

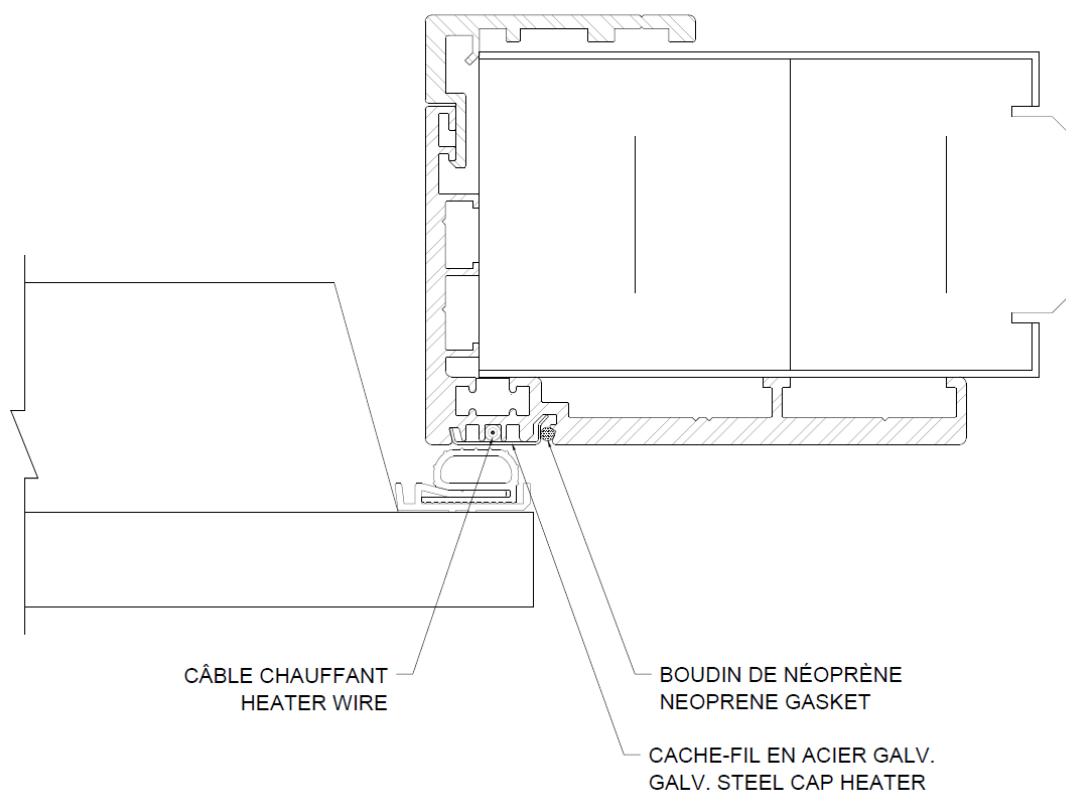


## INSTRUCTIONS FOR HEATER CABLE REPLACEMENT

### DIAGRAM #3: P-330 DOOR FRAME (DISCONTINUED)

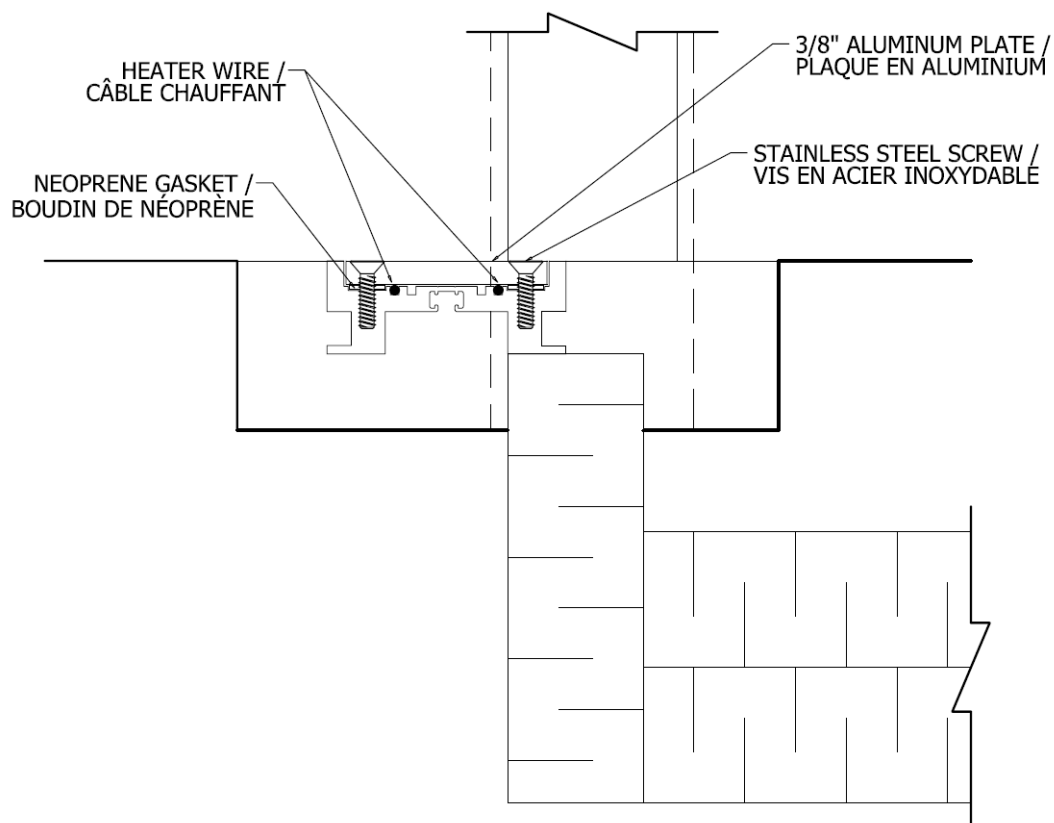


### DIAGRAM #4: L-1650 DOOR FRAME (DISCONTINUED)

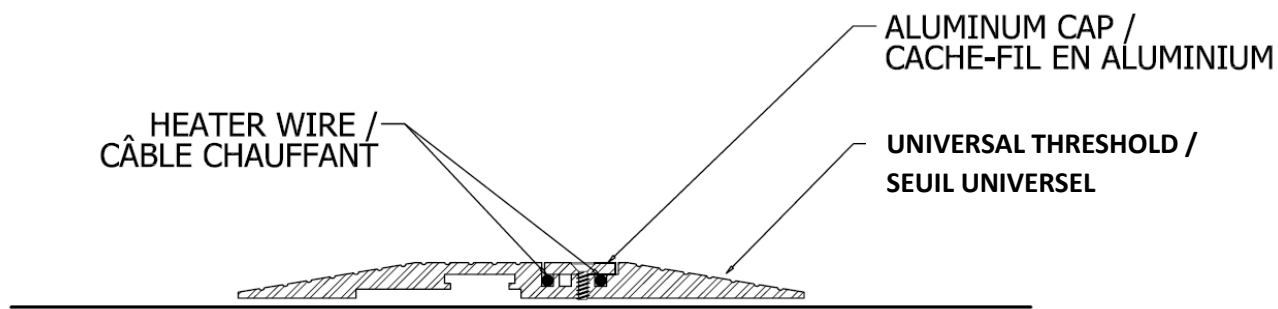


## INSTRUCTIONS FOR HEATER CABLE REPLACEMENT

### DIAGRAM #5: RT-1000 RECESSED TESHOLD

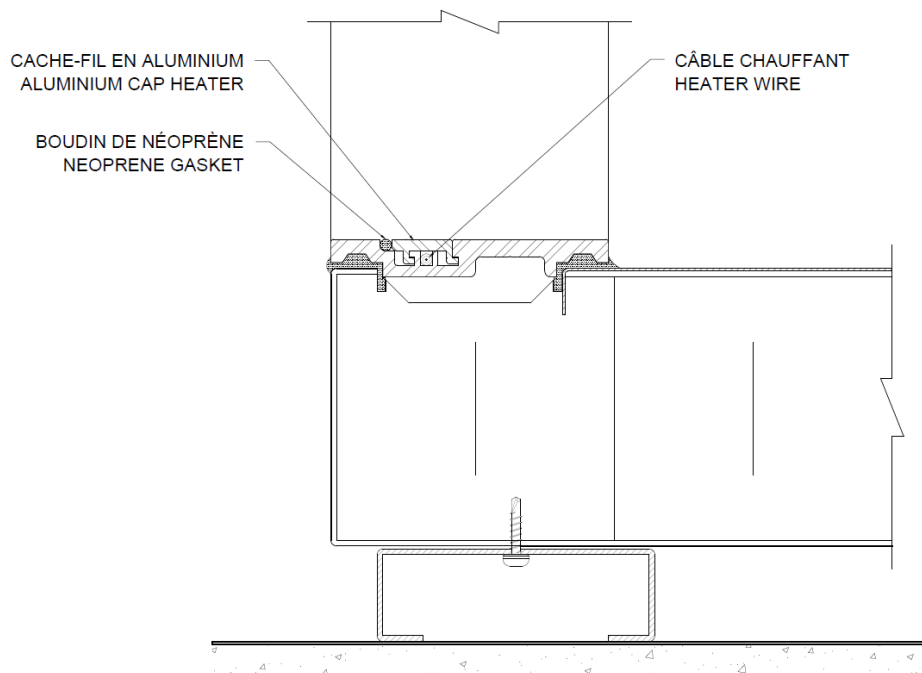


### DIAGRAM #6 : UNIVERSAL TRESHOLD

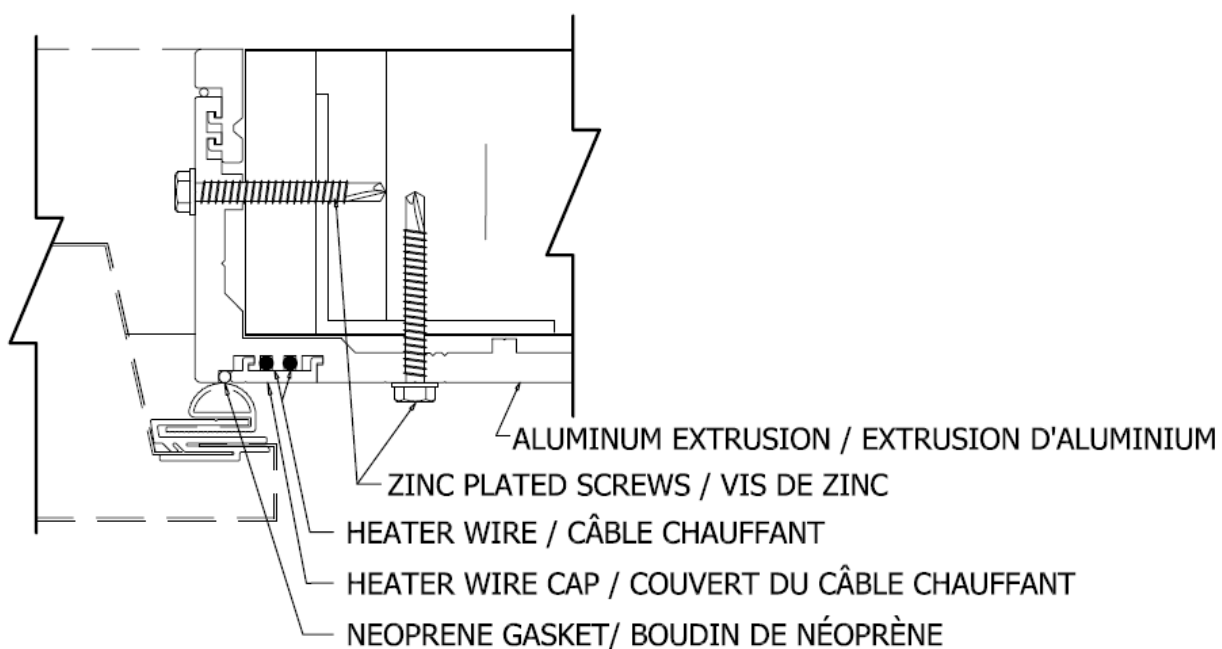


## INSTRUCTIONS FOR HEATER CABLE REPLACEMENT

### DIAGRAM #7: INTEGRATED TRESHOLD



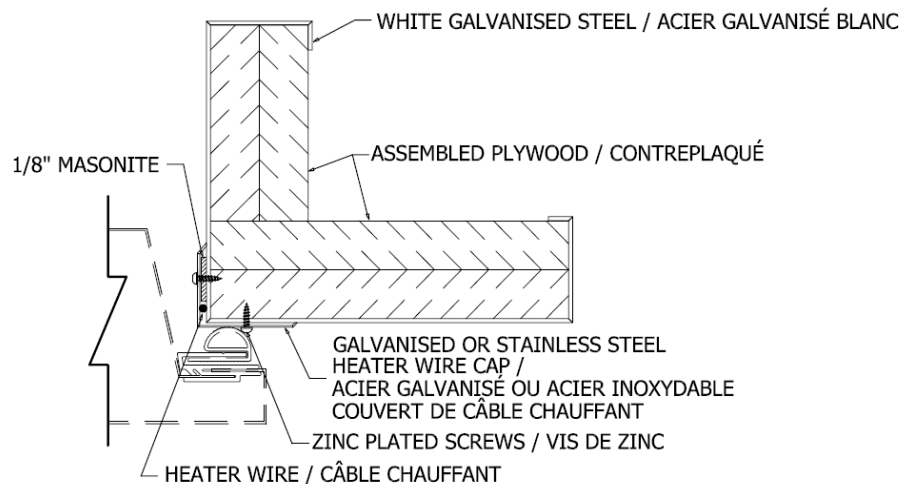
### DIAGRAM #8: « L » TYPE, FREEZER DOOR FRAME (DISCONTINUED)



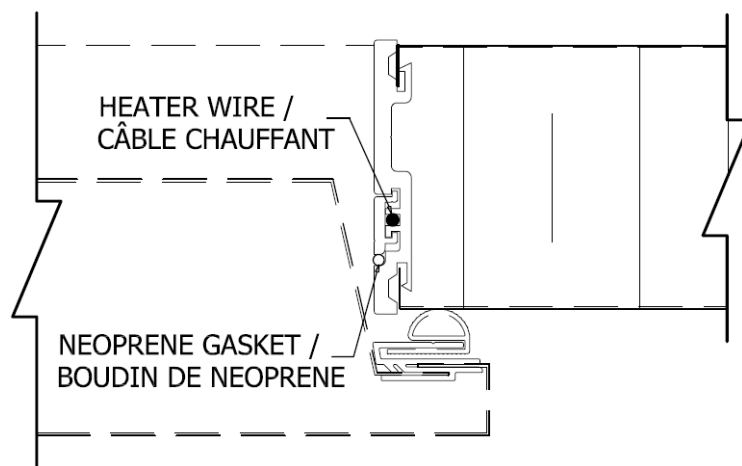
## INSTRUCTIONS FOR HEATER CABLE REPLACEMENT

### DIAGRAM #9: L-600 DOOR FRAME (DISCONTINUED)

The heater cable needs to be covered (under and over) with aluminum tape (reference Drawing #11)



### DIAGRAM #10: P-120 DOOR FRAME (DISCONTINUED)



### DIAGRAM #11: HEATER CABLE ON WOOD PIECE (DISCONTINUED)

