



INSTALLATION GUIDE

ARCHITECTURAL ELEMENTS | FINS



Installation guide for Architectural Elements | Fins

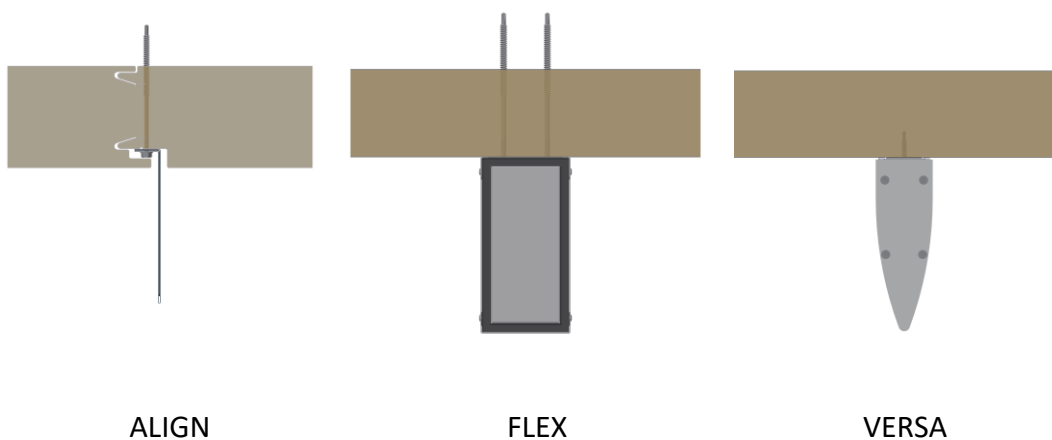
- Introduction.....3*
- Compatibility with Panels3*
- ALIGN FINS5***
 - ALIGN – Pre-Painted Galvanized Steel.....5**
 - ALIGN - Aluminum9**
- FLEX FINS13***
 - FLEX – Surface Mounting.....16**
 - FLEX – Girt Mounting19**
- VERSA FINS22***
 - VERSA – Surface Mounting.....25**
 - VERSA – Girt Mounting29**

Introduction

The purpose of this guide is to provide the installer with recommended methods, procedures and guidelines for the installation of architectural elements (fins).

For any questions or specifications not detailed in this guide, please contact your Norbec sales representative.

Three models to better serve you!



Compatibility with Panels

Panel Type	Mounting	ALIGN	FLEX	VERSA
NOREX-L	Surface		X	X
	Girts		X	X
NOREX-H	Surface		X	X
	Girts	X	X	X
NOROC-L	Surface			
	Girts		X	X

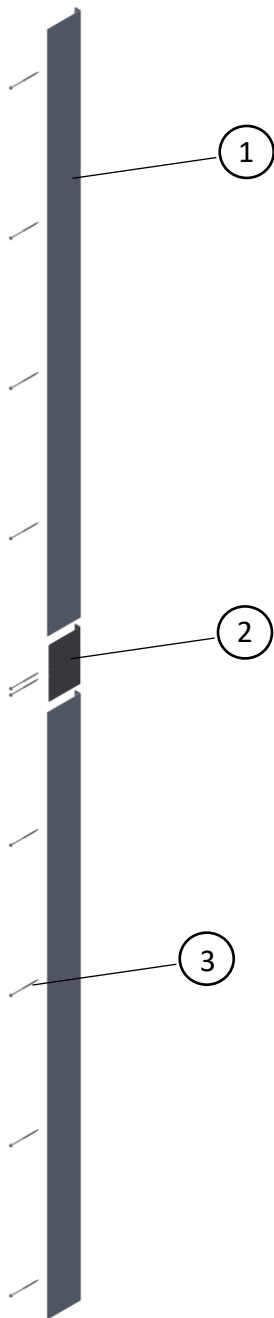
General Information

- The building's secondary structure (girts) must comply with NBCC standards.
- Fins are designed to withstand wind loads prescribed by the NBCC.
- It is the installer's responsibility to assess and confirm the conformity of each fin component before beginning installation. Validation includes, but is not limited to, fin type, colour, size, number, overall compliance, etc.
- Installation work must be conducted in compliance with occupational health and safety regulation in force in the territory where installation is located.
- Please refer to the project shop drawings for localisation and project specific information regarding Fins installation.
- Fins must be stored in a way that preserves their physical integrity.
- Installing fins involves the same considerations as installing panels.
- Sealant recommendations:
 - Minimum application temperature: -29°C
 - Minimum recommended bead size: $\varnothing 1/4''$
 - A 1:20 solution of soapy water can be used to shape the joint.
 - Application must be meticulous for aesthetic purposes.

ALIGN FINS

ALIGN – Pre-Painted Galvanized Steel

Exploded View



- 1. Blade
- 2. Junction piece
- 3. Intermediate screw

List of Parts:



BLADE



JUNCTION PIECE



INTERMEDIATE SCREW
GIRT SCREW

Material Required

- Caulking gun
- Drill

General Considerations

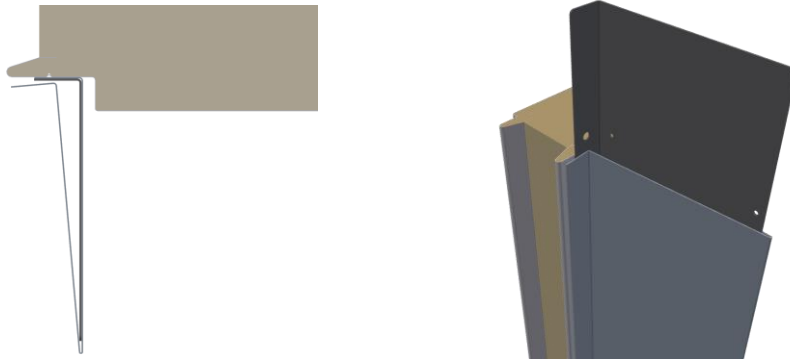
- ALIGN fins must be installed at the same time as the architectural panels.
- Steps 1 to 6 are performed with the panel on the ground.

Installation Procedure

Preparation of fin

1. Remove the protective film from the ALIGN fin.
2. Install the junction piece.

Note: A stacking joint is required if the total length exceeds 12'.

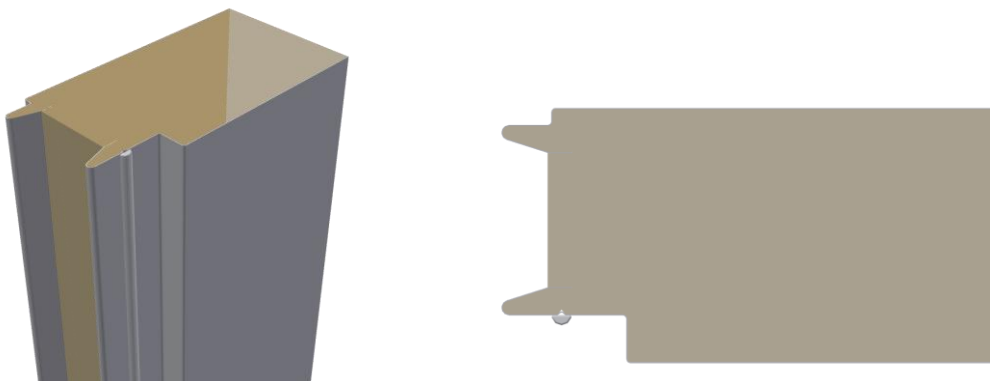


Preparation of NOREX-H panel

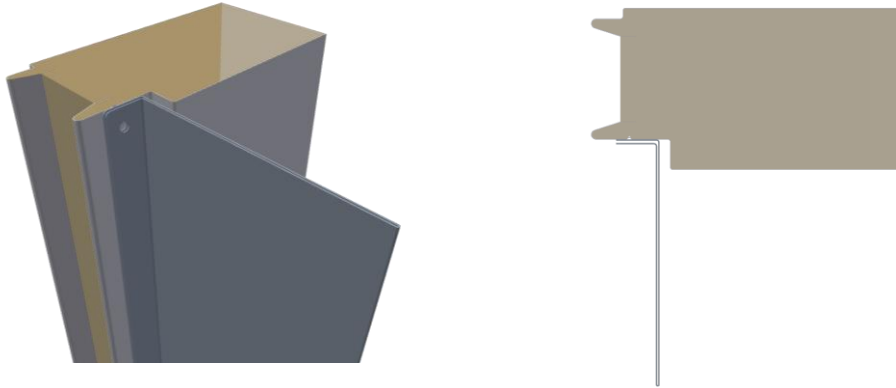
3. Remove the protective film from the NOREX-H panel.
4. Inspect the reveal where the fin will be installed. The surface must be clean, dry and dust-free.

Installation of fin on panel

5. Place a straight, continuous $\varnothing 3/8$ " sealant joint.



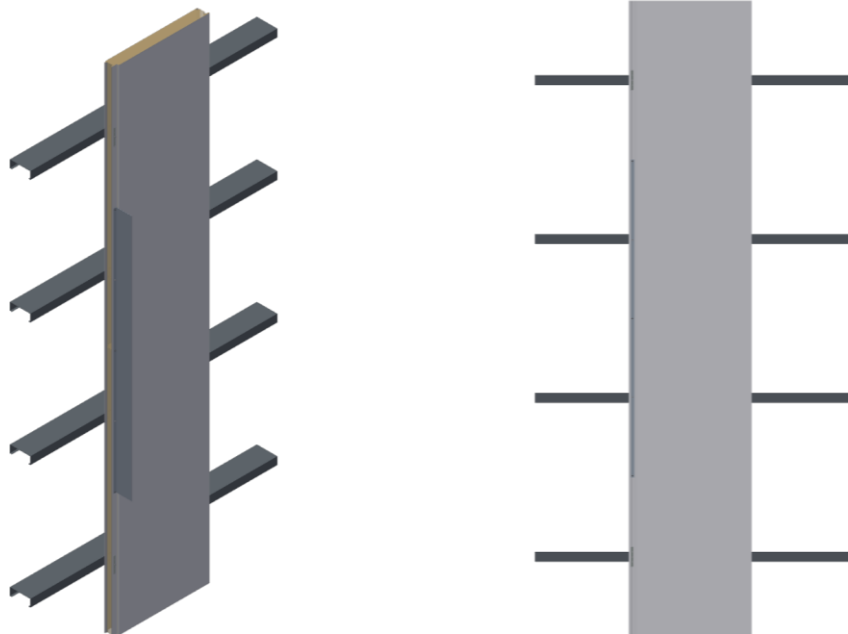
6. Position the fin and install the intermediate screws.



Installation of panel

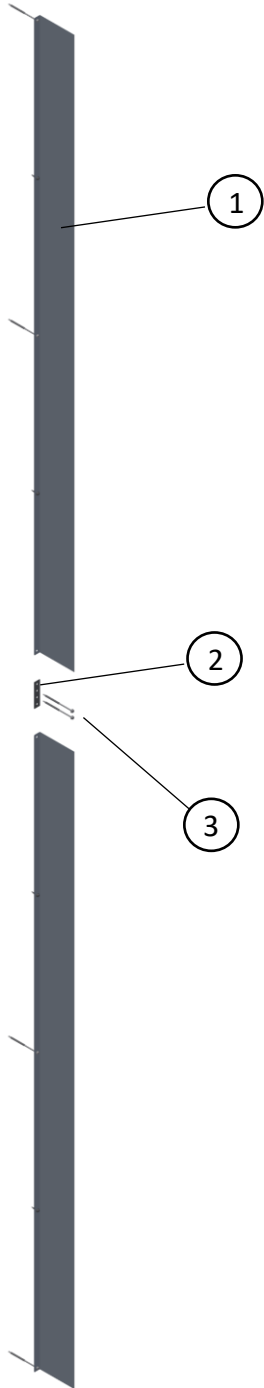
7. Install the NOREX-H panel in compliance with industry standards.

Note: The NOREX-H fastening clip is not required when an ALIGN fin is fitted. However, the number of screws must be respected.



ALIGN - Aluminum

Exploded View



- 1. Blade
- 2. Junction piece
- 3. Intermediate screw

List of Parts



BLADE



JUNCTION PIECE



INTERMEDIATE SCREW
GIRT SCREW

Material Required

- Caulking gun
- Drill

General Considerations

- ALIGN fins must be installed at the same time as the architectural panels.
- Steps 1 to 5 are performed with the panel on the ground.

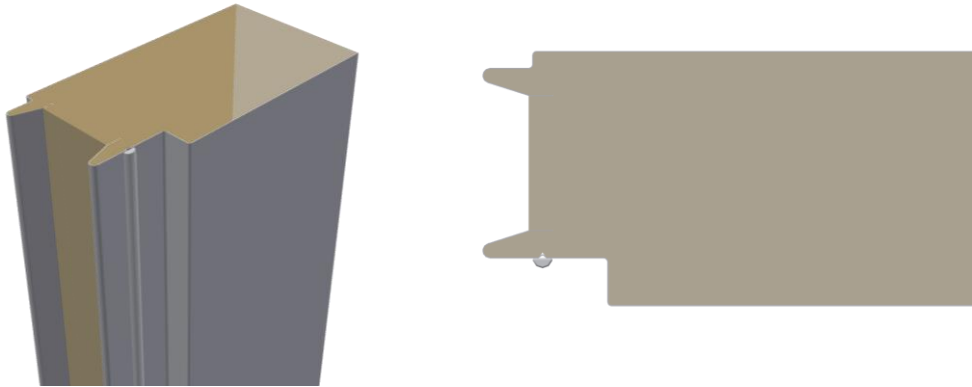
Installation Procedure

Preparation of NOREX-H panel

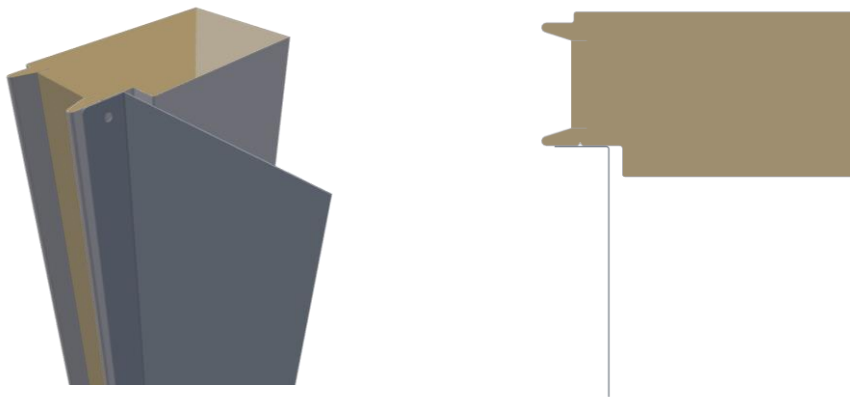
1. Remove the protective film from the NOREX-H panel.
2. Inspect the reveal where the fin will be installed. The surface must be clean, dry and dust-free.

Installation of fin on panel

3. Place a straight, continuous $\varnothing 3/8$ " sealant joint.



4. Position the fin and install the intermediate screws.



5. Install the junction piece.

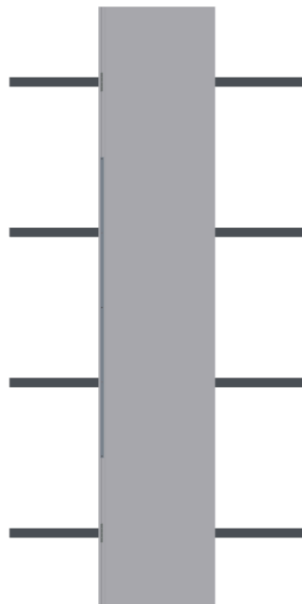
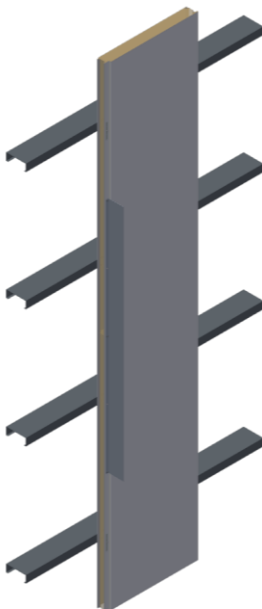
Note: A stacking joint is required if the total length of ALIGN fin exceeds 12'.



Installation of panel

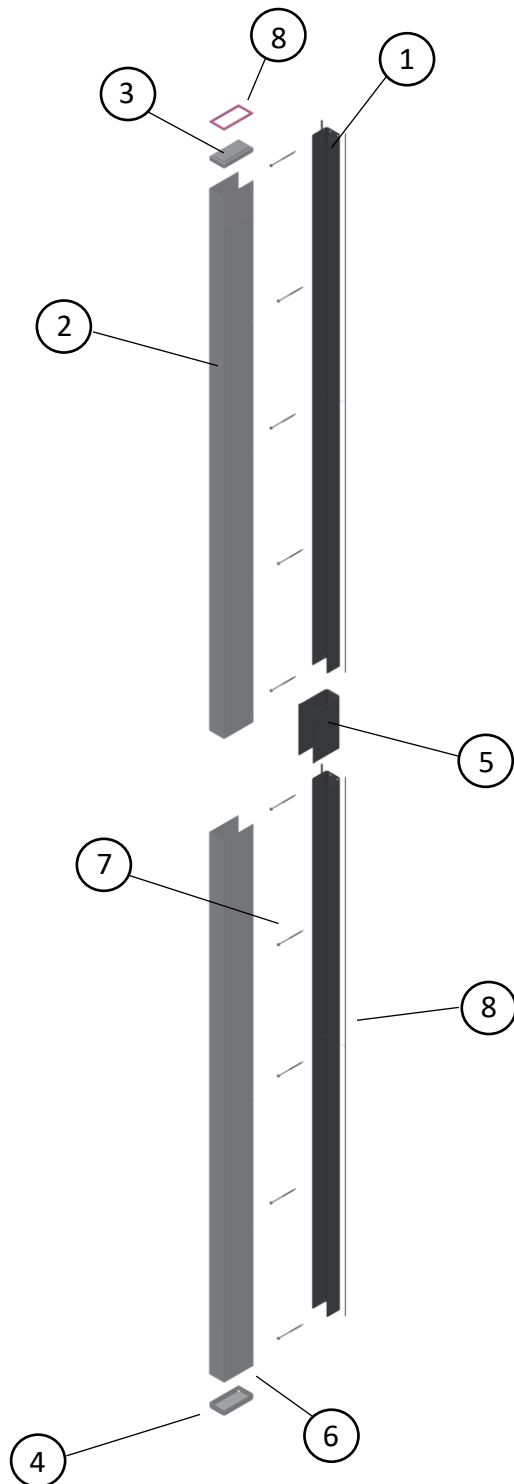
6. Install the NOREX-H panel in compliance with industry standards.

Note: The NOREX-H fastening clip is not required when an ALIGN fin is fitted. However, the number of screws must be respected.



FLEX FINS

Exploded View



- 1. Galvanized rail
- 2. Decorative box
- 3. Top cover
- 4. Lower cover
- 5. Alignment piece
- 6. Finishing screw
- 7. Intermediate screw
- 8. Sealant

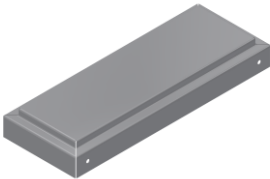
List of Parts



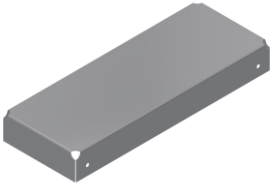
INTERIOR PART (GALVANIZED U)



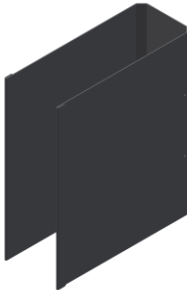
EXTERIOR PART (DECORATIVE BOX)



SEALED COVER



NON-SEALED COVER



JUNCTION PIECE

Material Required

- Caulking gun
- Drill
- Rivet gun

General Considerations

- FLEX fins must be anchored to the NOROC panels at the girts.
- FLEX fins can be installed at the same time as the panels, or at a subsequent stage.
- Two options of finishing hardware are available: screws or rivets. Please refer to Norbec specifications.
- To enhance aesthetics, finishing hardware (rivets or screws) must be painted. Please refer to Norbec specifications.
- If a FLEX fin is to be installed on more than one panel, please refer to the procedure for fastening to girt (omit step 10 if fastening to girts is not required).

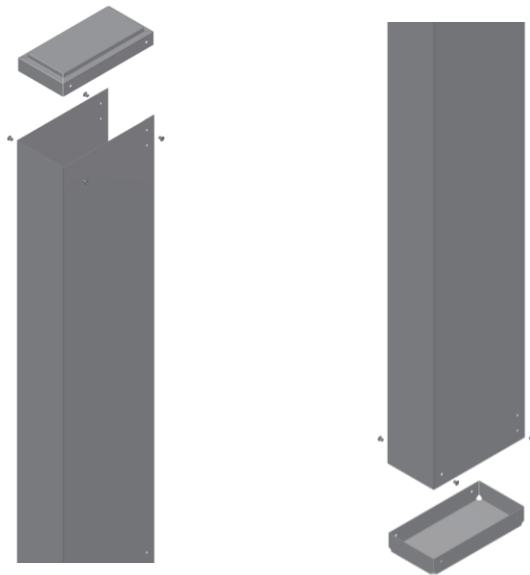
FLEX – Surface Mounting

Installation Procedure

Note: To the extent possible, steps 1 to 8 should be carried out with the panel on the ground.

Preparation of FLEX fin

1. Remove the protective film from the FLEX fin.
2. Position the covers on the decorative box and secure them with the chosen hardware (rivets or screws).



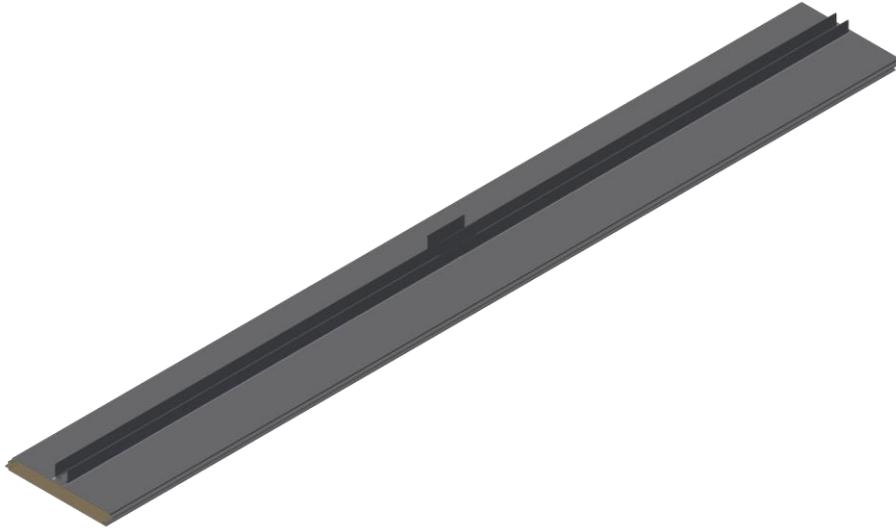
Preparation of Norbec panel

3. Remove the protective film from the Norbec panel.
4. Locate the area where the FLEX fin is to be installed. The surface must be clean, dry and dust-free.

Installation of FLEX fin on panel

5. Position FLEX rails and junction piece.

Note: A stacking joint is required if the total length of the FLEX fin exceeds 12'.



6. Install intermediate screws.

Note: Each pre-drilled hole in the rail must have an intermediate screw.

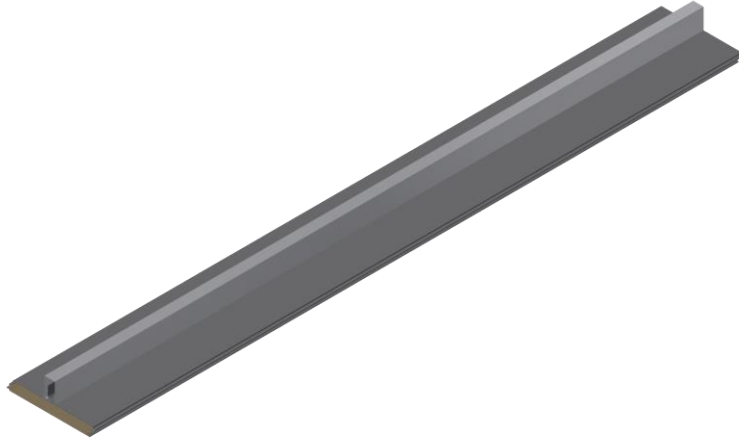
7. Place a straight, continuous $\phi 1/4$ " sealant joint in the chamfer on each side of the rail.

Note: The sealant must be concealed. Special care must be taken to avoid applying sealant on the outside of the chamfer.

8. Shape the sealant joint.

9. Position the decorative box assembly on the rail and secure with the chosen hardware (rivets or screws).

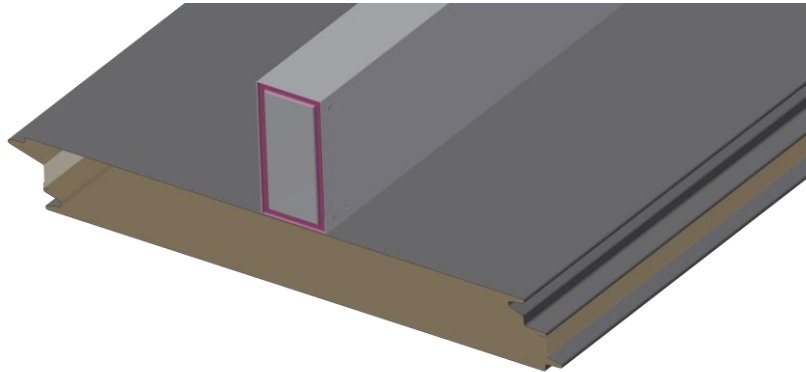
Note: For aesthetic purposes, the rivets or finishing screws must be painted.



10. Sealed covers require a sealant in the cover groove connecting to the fin.

Notes:

- The sealant will be visible. Norbec recommends using a sealant colour compatible with the project.
- Special care must be taken when applying sealant.



Installation of panel

11. Install the Norbec panel in compliance with industry standards.

FLEX – Girt Mounting

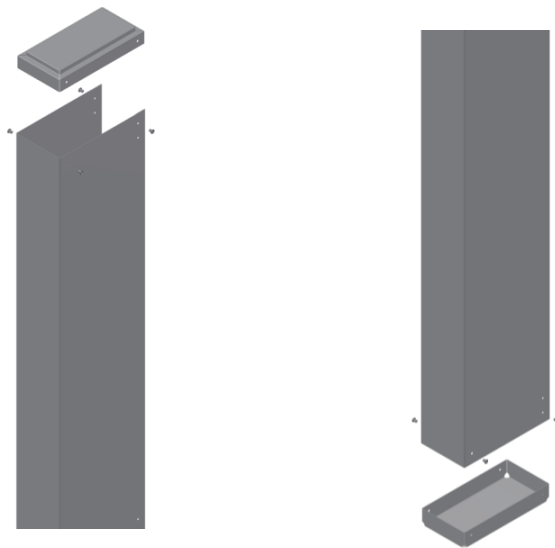
General Considerations

- To the extent possible, steps 1 to 8 should be carried out with the panel on the ground.
- In the event that the FLEX fin overlaps with the panel joint, it is recommended to offset the fin from the joint by 1-1/2" to avoid the fin's anchoring screw from interfering with the fastening clip in the panel joint.

Installation Procedure

Preparation of FLEX fin

1. Remove the protective film from the FLEX fin.
2. Position the covers on the decorative box and secure them with the chosen hardware (rivets or screws).



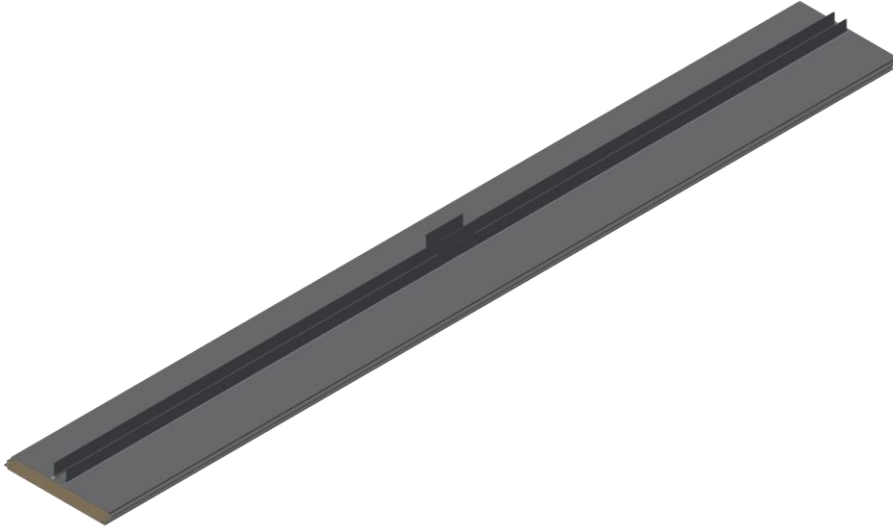
Preparation of Norbec panel

3. Remove the protective film from the Norbec panel.
4. Locate the area where the FLEX fin is to be installed. The surface must be clean, dry and dust-free.

Installation of FLEX fin on panel

5. Position FLEX rails and junction piece.

Note: A stacking joint is required if the total length of the FLEX fin exceeds 12'.



6. Install intermediate screws.

Note: Each pre-drilled hole in the rail must have an intermediate screw.

7. Place a straight, continuous $\phi 1/4$ " sealant joint in the chamfer on each side of the rail.

Note: The sealant must be concealed. Special care must be taken to avoid applying sealant on the outside of the chamfer.

8. Shape the sealant joint.

Installation of panel

9. Install the Norbec panel in compliance with industry standards.
10. For each girt the FLEX fin crosses, add 1 to 2 1/4 tek screws up to the building girt.

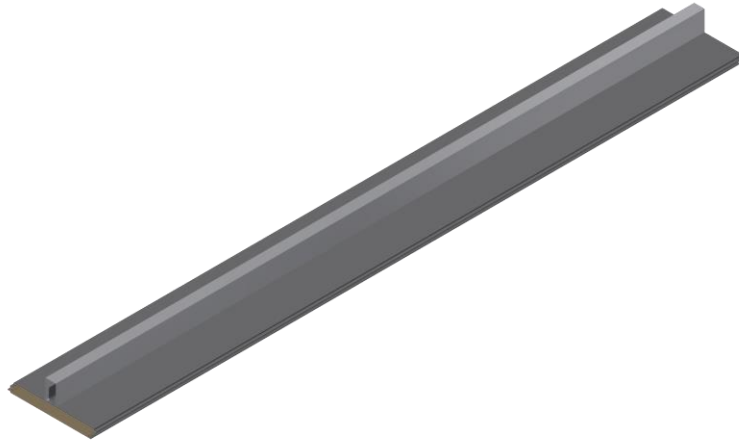
Notes:

- Maximum 12' screw spacing at girts.
- Screws should be selected according to thickness of panel and girt.

Installation of decorative box

11. Position the decorative box on the rail and secure with the chosen hardware (rivets or screws).

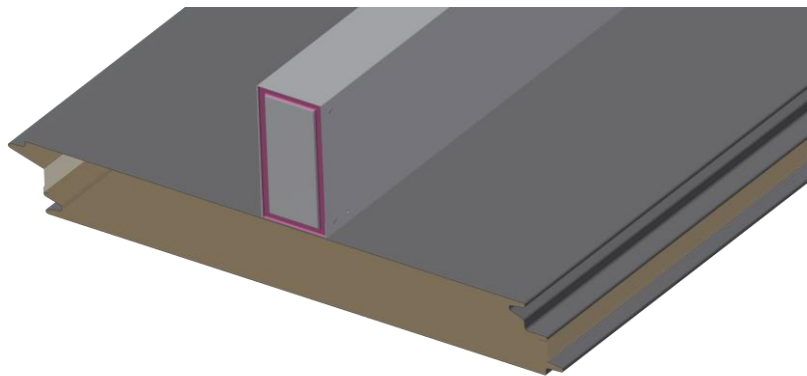
Note: For aesthetic purposes, the rivets or finishing screws must be painted.



12. Sealed covers require a sealant in the cover groove connecting to the fin.

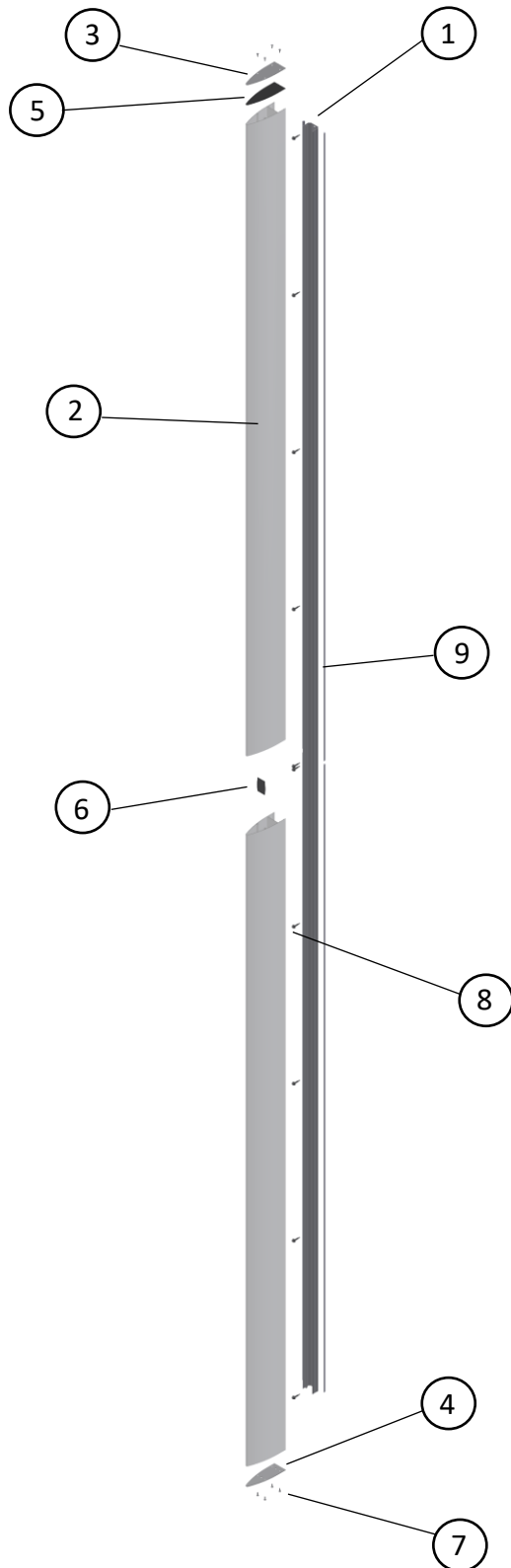
Notes:

- The sealant will be visible. Norbec recommends using a sealant colour compatible with the project.
- Special care must be taken when applying sealant.



VERSA FINS

Exploded View



- 1. Pressure band rail
- 2. Decorative box
- 3. Top cover
- 4. Lower cover
- 5. Rubber seal
- 6. Alignment piece
- 7. Finishing screw
- 8. Intermediate screws
- 9. Sealant

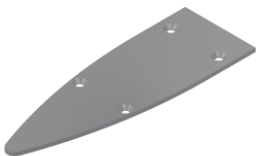
List of Parts



INTERIOR PART (PRESSURE BAND)



EXTERIOR PART (DECORATIVE BOX)



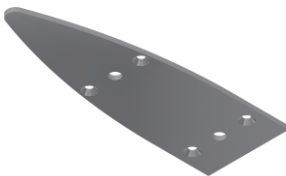
SEALED COVER



INTERMEDIATE SCREW AND
FINISHING SCREW



ALIGNMENT PIECE
(DIAMOND)



NON-SEALED COVER



RUBBER SEAL

Material Required

- Caulking gun
- Drill

General Considerations

- VERSA fins must be anchored to the NOROC panels at the girts.
- VERSA fins can be installed at the same time as the panels, or at a subsequent stage.
- To enhance aesthetics, finishing hardware (screws) must be painted. Please refer to Norbec specifications.
- If a VERSA fin is to be installed on more than one panel, please refer to the procedure for fastening to girt (omit step 8 if fastening to girts is not required).

VERSA – Surface Mounting

Installation Procedure

Note: To the extent possible, steps 1 to 10 should be carried out with the panel on the ground.

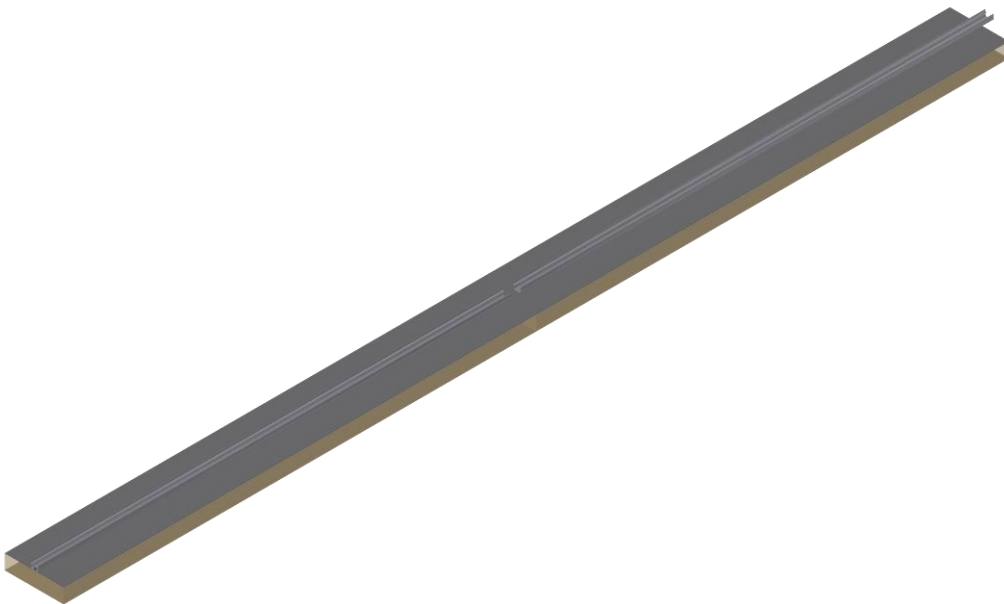
Preparation of Norbec panel

1. Remove the protective film from the Norbec panel.
2. Locate the area where the VERSA fin is to be installed. The surface must be clean, dry and dust-free.

Installation of VERSA fin on panel

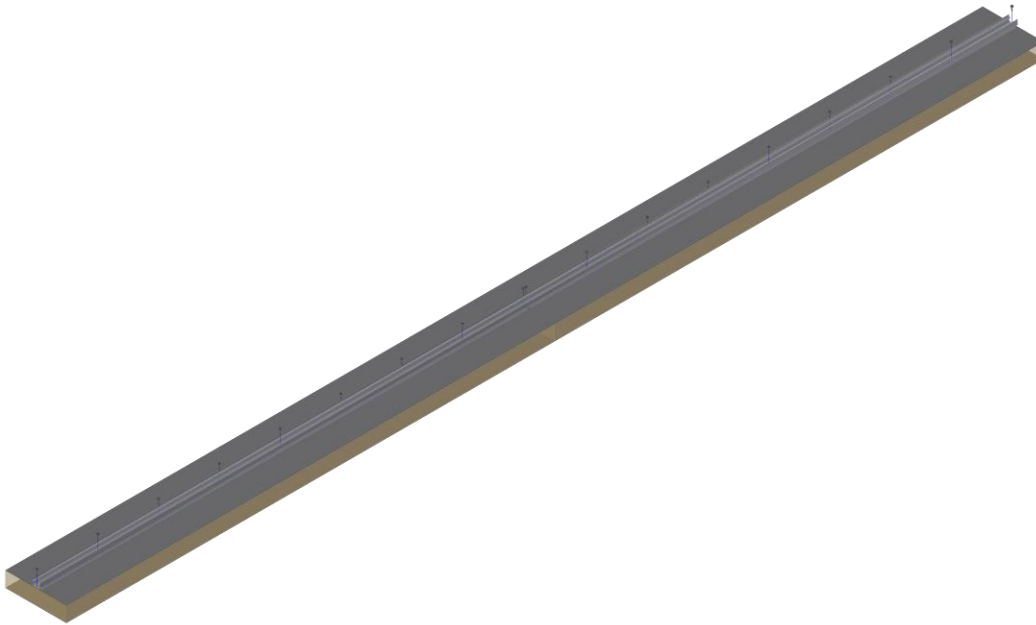
3. Position VERSA rails.

Note: A stacking joint is required if the total length of the VERSA fin exceeds 20'.



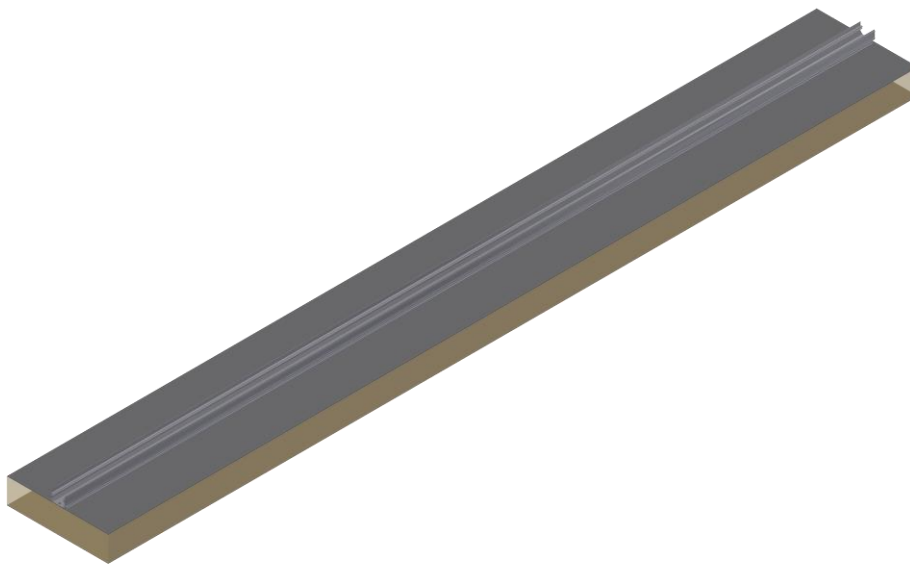
4. Install intermediate screws.

Note: Each pre-drilled hole in the rail must have an intermediate screw.



5. Place a straight, continuous $\phi 1/4"$ sealant joint in the chamfer on each side of the rail.

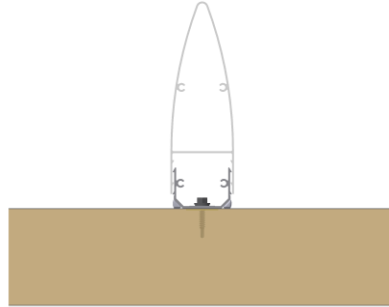
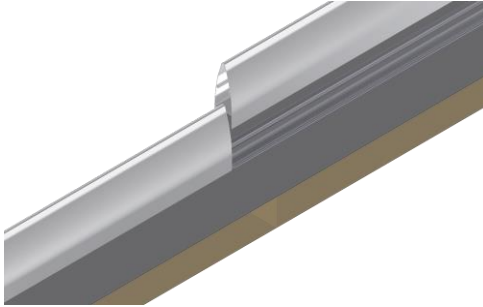
Note: The sealant must be concealed. Special care must be taken to avoid applying sealant on the outside of the chamfer.



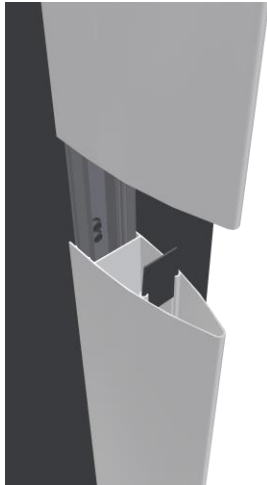
6. Shape the sealant joint.

7. Insert the decorative box on the rail at mid-depth.

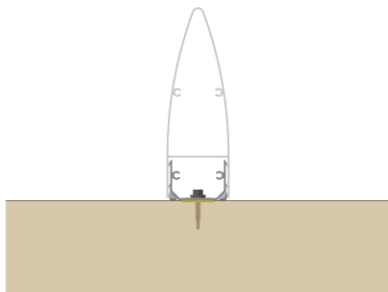
Note: If a stacking joint is used, do not overlap the decorative box joint with the rail joint.



8. If a stacking joint is used, install the junction piece between the two decorative box lengths.



9. Using a mallet, insert the decorative box onto the rail to full depth.



10. Position the covers on the decorative box and secure with the finishing hardware (screws).



Installation of panel

11. Install the Norbec panel in compliance with industry standards.

VERSA – Girt Mounting

General Considerations

- To the extent possible, steps 1 to 6 should be carried out with the panel on the ground.
- In the event that the VERSA fin overlaps with the panel joint, it is recommended to offset the fin from the joint by 1-1/2" to avoid the fin's anchoring screw from interfering with the fastening clip in the panel joint.

Installation Procedure

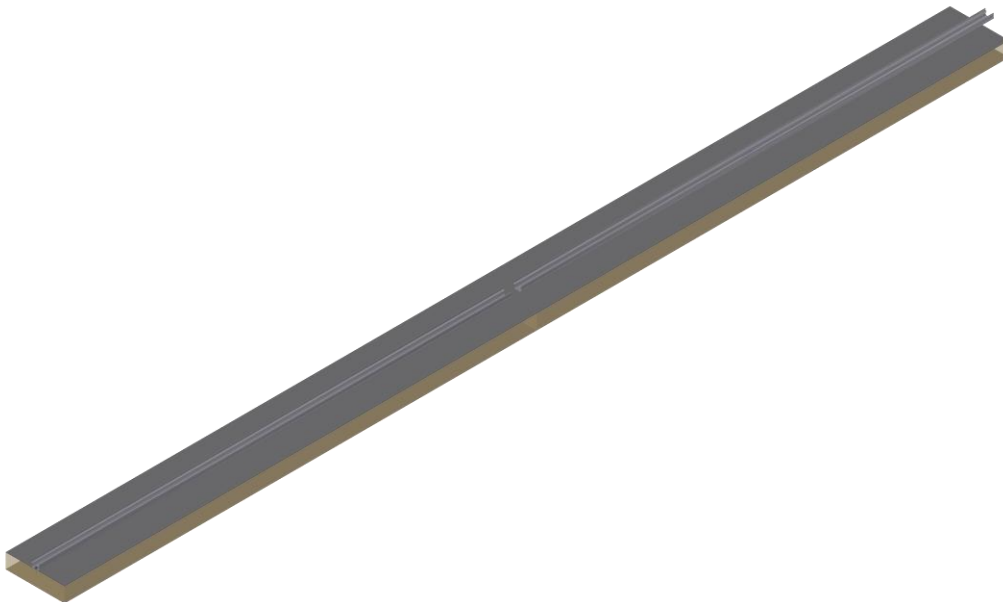
Preparation of Norbec panel

1. Remove the protective film from the Norbec panel.
2. Locate the area where the VERSA fin is to be installed. The surface must be clean, dry and dust-free.

Installation of rails on panel

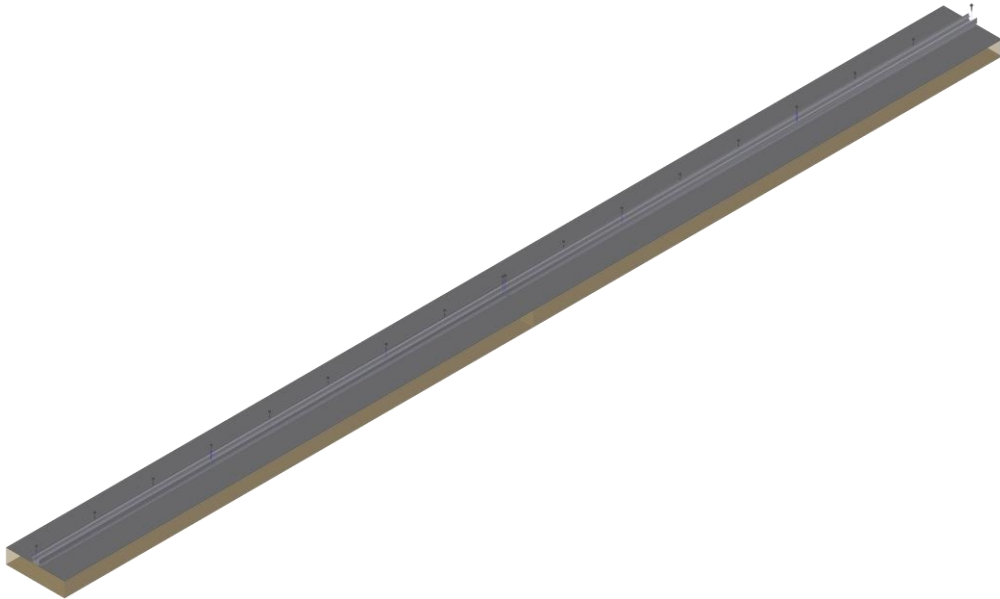
3. Position VERSA rails.

Note: A stacking joint is required if the total length of the VERSA fin exceeds 20'.



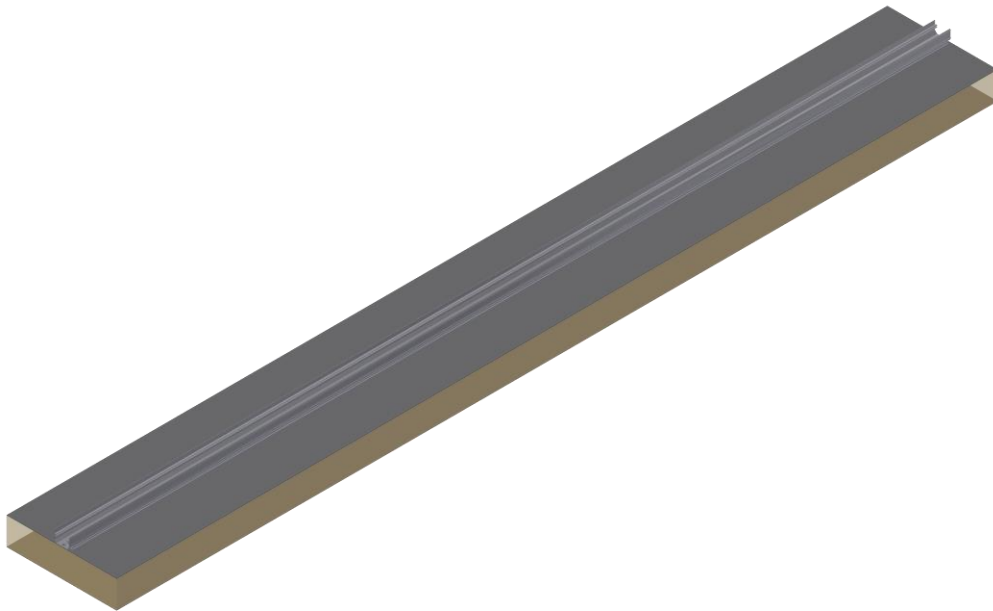
4. Install intermediate screws.

Note: Each pre-drilled hole in the rail must have an intermediate screw.



5. Place a straight, continuous $\phi 1/4"$ sealant joint in the chamfer on each side of the rail.

Note: The sealant must be concealed. Special care must be taken to avoid applying sealant on the outside of the chamfer.



6. Shape the sealant joint.

Installation of panel

7. Install the Norbec panel in compliance with industry standards.
8. For each girt the VERSA fin crosses, add 1 to 2 1/4 tek screws up to the building girt.

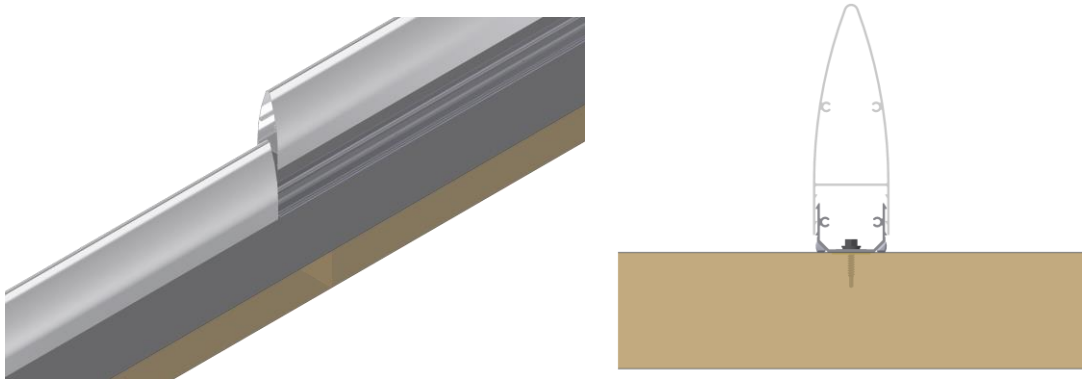
Notes:

- Maximum 12' screw spacing at girts.
- Screws should be selected according to thickness of panel and girt.

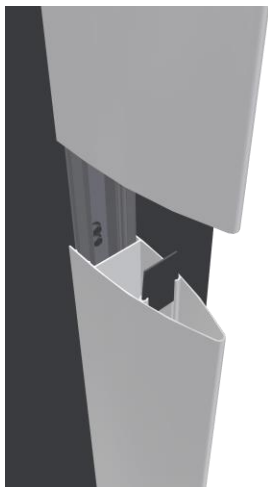
Installation of decorative box

9. Insert the decorative box on the rail at mid-depth.

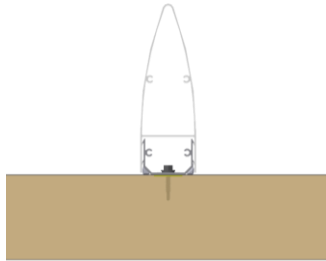
Note: If a stacking joint is used, do not overlap the decorative box joint with the rail joint.



10. If a stacking joint is used, install the junction piece between the two decorative box lengths.



11. Using a mallet, insert the decorative box onto the rail to full depth.



12. Position the covers on the decorative box and secure with the finishing hardware (screws).





Norbec Architectural Inc.

97 rue de Vaudreuil, Boucherville (QC),
Canada, J4B 1K7, 1 877 667 2321

All rights reserved to Norbec