

# FOOD PROCESSING SOLUTIONS



# FOOD PROCESSING SOLUTIONS

## ❄ MEETING FOOD AND SAFETY REQUIREMENTS

The key for quality and freshness of food resides in the quality of its processing and preservation environment. Therefore, food needs to be kept in sheltered and controlled environments ensuring these standards are met during the entire process. Whether meat and poultry, fruits and vegetables or dairy and egg products, manufacturers require reliable, safe and energy efficient environments.

## ☀ THE RIGHT INSULATION FOR ENERGY EFFICIENCY

Food must be stored in environments with specific temperatures and humidity levels to maintain cold chain. In addition to preserving the cold chain, prioritizing energy efficiency in food processing environments is paramount for optimizing operational costs and minimizing environmental impact, ensuring sustainable and resource-conscious production practices. Norbec's reliable solutions provide the right insulation to ensure temperature is maintained and kept constant.

## ↗ CUSTOM FABRICATION FOR OPTIMAL DESIGN

Thanks to our advanced manufacturing processes, which seamlessly integrate continuous and camlock panels, and provide unlimited options for custom doors, we offer unparalleled design flexibility. This empowers us to create optimal operational environments that cater to both efficient processes and employee well-being. We specialize in custom solutions designed for the distinct needs of food processing projects, delivering tailored solutions that optimize storage capacities, ensure meticulous energy efficiency, and maximize labor productivity in every stage of production. The insulated panels and supplied accessories are designed to ensure optimized and quick assembly to adapt to any project type.



Norbec has been a trusted North American manufacturer of insulated metal solutions for over 40 years. We have been serving the food processing industry for many years and have been part of many project success stories. Our commitment to excellence transcends the mere production of panels. We pride ourselves on our quality products, but we also differentiate ourselves by providing comprehensive, high-quality solutions, perfectly tailored to your distinct needs as well as by offering exceptional technical and engineering support every step of the projects we are involved in.

## ✓ APPLICATIONS

Our cold storage solutions are suitable for a wide variety of different storage facilities. **Here's a list of different applications:**

- › Food and dairy products
- › Nutritional supplements
- › Beverage facilities
- › Specialized products
- › Other applications: hospitality, breweries, fisheries, stores, etc.

## ✎ KEY FEATURES OF NORBEC FOOD PROCESSING SOLUTIONS

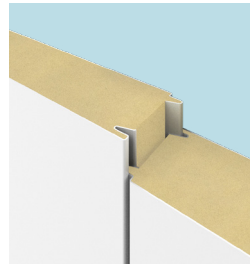
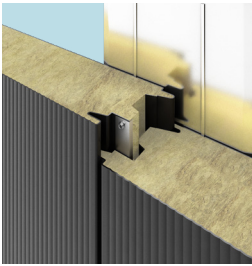
- › Reliable products
- › Heavy-duty construction
- › High thermal efficiency
- › Superior insulation
- › Food safety and hygiene
- › Backed by industry expertise
- › Innovative design
- › Ease of access to technical support
- › Ease of installation



# 🔥\* NORBEC INSULATED METAL PANELS

Continuous panels find frequent application in controlled environment facilities due to their adaptability to precise dimensions and needs. Available for interior and exterior applications in diverse thicknesses, sizes, and setups, they offer design flexibility, ensuring the facility aligns with the targeted thermal performance and storage capabilities. Moreover, these panels exhibit substantial durability against wear, tear, and corrosion, consequently diminishing maintenance demands and prolonging the facility's lifespan.

Insulated metal panels (IMPs) offer multiple advantages such as superior insulation, durability, and ease of installation as well as meeting strict health and safety requirements. The advantage of IMPs resides in the fact that they are installed in one simple step once arrived on site. Whereas traditional frame-and-drywall constructions require up to eleven steps, which can lead to longer installation time and inconsistency.



## Noroc

Noroc is a high performance, fire-rated insulated architectural panel. It has a mineral core made of a rigid stone-fibre insulation board composed of natural basalt rock and recycled slag. Because of its composition, this product offers excellent fire resistance properties in addition to meeting health requirements. The core's natural inorganic content yields an environmentally friendly, fully recyclable panel.

**Panel thickness available\* : 4, 5, 6 and 8 inches.**

## Norex

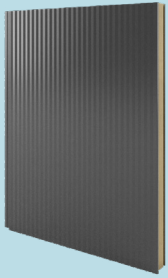
Norex is a polyisocyanurate (PIR) core panel designed for highly efficient buildings. In addition to being ideal for interior partitions or suspended ceilings, this panel offers unparalleled thermal value, as well as providing fire (FM 4880 4881) protection barriers. Norex is designed with an equalization compartment preventing water from being drawn inward therefore reducing the risk of water and moisture infiltration.

**Panel thickness available\* : 2, 3, 4, 5, 6 and 8 inches.**

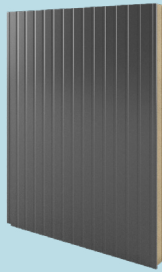


# COLORS AND FINISHES

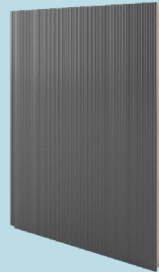
## Profiles



**Silkline (Striated)**  
A Norbec Exclusivity

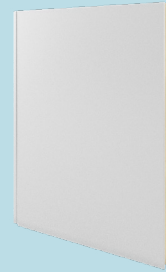


**Fluted**



**Micro-ribbed**

## Finishes



**Smooth**  
(Available under certain circumstances)

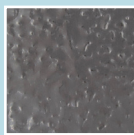


**Embossed**

## Interior colors



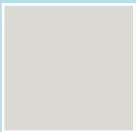
**Advantica-L® control - G90**  
available in 24 Gauge



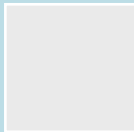
**Stainless Steel 304-2B embossed**  
available in 24 Gauge



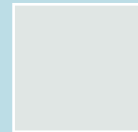
**White White - G90**  
available in 26 Gauge



**Imperial White - G90**  
available in 24 and 26 Gauge



**Igloo White - G60**  
available in 26 Gauge

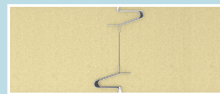


**Bright White - G90**  
available in 26 Gauge

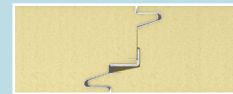
## Exterior colors

Consult the Color Guide Brochure for the complete assortment of colors in the Building Envelope section on [norbec.com](http://norbec.com).

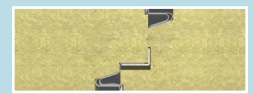
# JOINTS AVAILABLE



**Norex - S Joint**  
Standard width: 44"



**Norex - L Joint**  
\*Standard width: 42.5"



**Noroc - L Joint**  
Standard width: 42.5"

\*Other widths may be available.

# CERTIFICATIONS



## ✓ HIGHLY RESISTANT FINISHES

Food processing environments demand products that are highly resistant against corrosion, staining and have lasting performance. This can be achieved with Norbec's selection of stainless steel or **Advantica-L®** finish.

**Advantica-L®** is a highly durable pre-finished steel made up of a PVC outer layer conforming to the stringent requirements of food safety. Having superior properties to corrosion and stains as well as being anti-static reducing the attraction of dust and dirt, Advantica-L® and stainless steel are incomparable for this industry. Meeting strict regulations means easier maintenance and durability against highly chemical cleaning agents.

## 🚪 CUSTOM DOORS

Specializing in manufacturing custom products, Norbec has earned a solid reputation for the quality and sturdiness of our doors. Each door is individually designed and manufactured in-house offering durability and flexibility which is unmatched on the market. Throughout conception to production, the concern for quality is vital at every step of the process. In addition to providing superior insulation properties and enhanced waterproof sealing, the doors are designed to withstand daily activities for years to come.

### Hinged

- › Flush hinged door
- › Heavy duty hinged door (with aluminium frame)
- › Heavy duty bi-partition hinged door
- › Blast freezer door
- › Heavy duty door with overhead openings (typically for rails)

For the other door options, contact your local representative to ensure availability and lead time.

### Sliding

- › Heavy-duty sliding door (with aluminium frame)
- › Bi-partition sliding door (with aluminium frame)
- › Heavy duty sliding with overhead openings (typically for rails)
- › Electric sliding door equipped with the **E-Circuit System**

### Other Door Options

- › Traffic doors (single or double)
- › Glass doors



## CEILINGS

Our ceiling panels, often known as self-supporting ceilings, have the capability to cover spans of up to 12 feet without the need for extra support. Nevertheless, for safety considerations, it's essential to firmly affix ceilings wider than 12 feet to the underlying structure. These panels can adhere to pedestrian traffic regulations when constructed in accordance with specific guidelines, making it easier to access for maintenance purposes. Furthermore, we offer the choice of concealed ceiling suspensions specifically designed for Norex-L panels.

## ACCESSORIES

A wide range of accessories are available from standard to specific products. Listed below are the most commonly used accessories in food processing applications.

### 1 Window Frames

- › PVC
- › Stainless steel
- › Heated (frame and window)

### 2 Door Accessories

- › Heavy duty hinges (standard, stainless, powder coated)
- › Handles (standard, stainless, powder coated)
- › Hydraulic door closer
- › Panic bar

### 3 Rounded Corners made of PVC trims

### 4 Starting Screed (can be hidden if desired)

### 5 Bumper Protection

- › Stainless steel
- › Recycled plastic
- › High Density Polyethylene (HDPE)

### 6 Protection Plates

- › Stainless steel
- › Smooth
- › Galvanized
- › Thread plate (Diamond shape)

### 7 Pressure Relief Valve

### 8 Motion Sensor for Lights

### 9 High Bay Light Fixture

## EMBRACING ECO-SMART SOLUTIONS

### Sustainability with Insulated Metal Panels

Choosing insulated metal panels for the construction of cold storage facilities is a clear and compelling step toward sustainability. In contrast to numerous alternatives, these panels stand out for their exceptional durability, making them a responsible and eco-conscious choice.

### Quality

Norbec ensures quality and durability throughout its product lines to fit each client's specific needs. Only high-grade components are used in the conception of our products and frequent quality controls are performed throughout the manufacturing process to ensure compliance with the strictest food safety and building code regulations. With more than 40 years of expertise in product development, Norbec has earned the trust of its customers through the quality and service offered.

### Customer-Centred Approach

Norbec prioritizes customer feedback and, along with the latest trends, guarantees to always meet present and future regulations, thus securing durability & performance of our products. Beyond their daily tasks, our teams provide continuous improvements to our processes, our products and the services provided by our organization.

### Technical Support & Customer Service

Finding accurate solutions quickly and providing exceptional after-sales service and support is the main goal of our technical support & customer service teams. We rely on the integrity of our team to deliver consistent excellence servicing. Working together to provide on-time delivery, personal assistance and expert application engineering. Norbec takes pride in delivering top quality products, service, solutions and support promptly, always and anywhere.

## NEED EXPERTISE AND ADVICE ?

Norbec is a partner in any project by offering expertise and advice on specific products for all types of specifications no matter the complexity. Our dedicated team provides all the technical support required to help you complete your projects.

### **Norbec**

97 rue de Vaudreuil,  
Boucherville, QC Canada J4B 1K7  
1 877 667-2321

For more information about Norbec products, please visit [norbec.com](https://shop.norbec.com). To order your parts online or find out more related information, visit <https://shop.norbec.com/magasin/en/>.