

FLOOR LOAD CAPACITY

This guide provides an overview of all flooring options available at Norbec, including various finishes and configurations. It also covers compatible ramp solutions to ensure optimal installation.

MATERIAL AVAILABLE



Stainless Steel

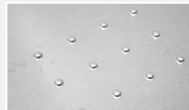


Smooth Aluminum



Galvanised Steel

ALSO AVAILABLE WITH THE SLIP RESISTANT FINISH



NextGrip

OTHER MATERIAL AVAILABLE

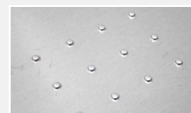


Aluminum Diamond Treadplate

OVERLAY AVAILABLE (FIELD APPLIED)



Aluminum Diamond Treadplate
1/8", 3/16" or 1/16"



NextGrip Slip Resistant Floor
aluminum 0,100" or 3/16"

RAMPS AVAILABLES



Interior Ramp



Exterior Ramp

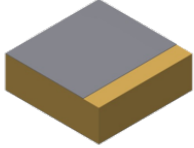
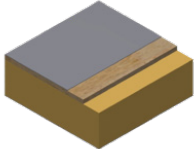
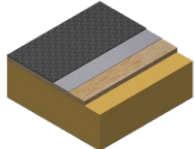
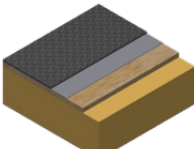
Composition : High density replast and foam

Width : The width depend of the door width

Depth : Customizable depth (Standard is 36")

ACA and ADA standards compliance available

INSULATED FLOORS

NAME	MINIMUM FLOOR CONFIGURATION	WEIGHT LIMITS			TYPICAL APPLICATION
		Total Load*	Rolling Load** (per wheel)	Point Load***	
	<p>Inner panel skin : Min 18 ga galv. steel, stainless steel or 0.100" aluminum</p> <p>PUR core insulation : Min 4"</p> <p>Outer panel skin : Min 26 ga galv. steel</p> <p>Floor spacers : 16 ga galv. steel on 16" c/c min</p>	600 psf	150 lb	N/A	<ul style="list-style-type: none"> - Foot Traffic - Light rolling loads (i.e. push carts)
	<p>Inner panel skin : Min 18 ga galv. steel, stainless steel or 0.100" aluminum</p> <p>Panel underlayment : Min 1/2" plywood</p> <p>PUR core insulation : Min 3 1/2"</p> <p>Outer panel skin : Min 26 ga galv. steel</p> <p>Floor spacers : 16 ga galv. steel on 16" c/c min</p>	600 psf	300 lb	62 psi	<p>All of the above and:</p> <ul style="list-style-type: none"> - Medium rolling loads (i.e. metal platform trucks) - Light duty shelving
	<p>Overlay : Min 1/8" aluminum</p> <p>Inner panel skin : Min 18 ga galv. steel</p> <p>Panel underlayment : Min 1/2" plywood</p> <p>PUR core insulation : Min 3 1/2"</p> <p>Outer panel skin : Min 26 ga galv. steel</p> <p>Floor spacers : 16 ga galv. steel on 16" c/c min</p>	600 psf	300 lb	125 psi	<p>All of the above and:</p> <ul style="list-style-type: none"> - Medium duty shelving
	<p>Overlay : Min 3/16" aluminum</p> <p>Inner panel skin : Min 16 ga galv. steel</p> <p>Panel underlayment : Min 1/2" plywood</p> <p>PUR core insulation : Min 3 1/2"</p> <p>Outer panel skin : Min 26 ga galv. steel</p> <p>Floor spacers : 16 ga galv. steel on 12" c/c min</p>	800 psf	700 lb	225 psi	<p>All of the above and:</p> <ul style="list-style-type: none"> - Heavy rolling loads (i.e. pallet pump trucks). - Heavy duty shelving

*Total Load: Is the maximum combined load that can be applied across the total floor area. It consists of the combination of the EDL (evenly distributed load), the live loads and point loads applied to the floor.

**Rolling Load: Is the maximum rating per wheel established by testing in accordance with modified ASTM C627 (Robinson test).

***Point Load: Is the maximum load accepted on the base plates (or foot plates) of the shelving.

COMPLIANCE WITH INDUSTRY STANDARDS



Natural Resources
Canada



1 877 667 2321 | NORBEC.COM

97, rue de Vaudreuil, Boucherville,
Québec J4B 1K7, Canada

All information provided in the present document is available at the time of printing. However, please note that in accordance with Norbec's product improvement policy, we reserve the right to make alterations at any time and without notice.

Rev. 01 | April 2025