



PANEL WITH POLYISOCYANURATE (POLYURETHANE)

The Norex-M is a multifunctional insulated metal panel suitable for vertical, horizontal, or diagonal installation, both indoors and outdoors.

NOREX[®]-M THE MULTI-CONFIGURATION PANEL

SPECIFICATIONS

DESCRIPTION

- Horizontal, Vertical & Diagonal Mounting
- Applications : Interior & Exterior
- Pressure-Equalized Rainscreen Joint

REVEAL | OPENING OPTION 1/8" or 3/4"

WIDTH ⁽¹⁾⁽²⁾ 24", 30", 36" or 42"

THICKNESS 3", 4", 5", 6" or 8"

R-VALUE

- R8/in @ 75 °F mean temperature ⁽⁴⁾
- R9/in @ 35 °F mean temperature ⁽⁴⁾

MAXIMUM LENGTH 60'

PROFILE

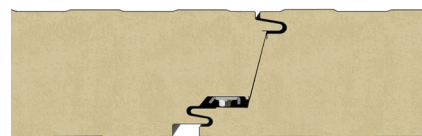
- Interior : Silkline or Grooved
- Exterior : Micro-ribbed, Silkline or Grooved

GAUGE

- Interior : 26, 24 or 22 ga
- Exterior : 26, 24 or 22 ga

WEIGHT (lbs/ft ²) ⁽³⁾	3"	4"	5"	6"	8"
	26/26 ga	2.14	2.35	2.56	2.77
24/24 ga	2.64	2.85	3.06	3.27	3.70
22/22 ga	3.14	3.35	3.56	3.77	4.20

JOINT



(1) The final module width may change due to fabrication and installation tolerances. It is not recommended to design panel layouts where precise panel joint position is critical, as minor variations may occur. (2) Product availability is subject to change without notice and minimum quantities may be required for certain product configurations. For more information, please contact your local representative. (3) Calculation based on an insulated density of 2.29. (4) Results as per ASTM C518 testing and technical evaluation.

APPLICATIONS

Norex-M panels are recognized for their multifunctionality, offering both exceptional installation flexibility and a wide range of applications. These panels are ideal for industrial and commercial buildings, cold storage, controlled environment buildings, sports centers, interior partitions and suspended ceilings with limited load-bearing capacity.

FEATURES / BENEFITS



- Exclusive and superior fastening system
- Wider girt spacing reduces costs
- Fast, simple & economical installation

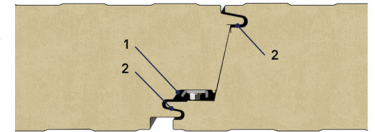
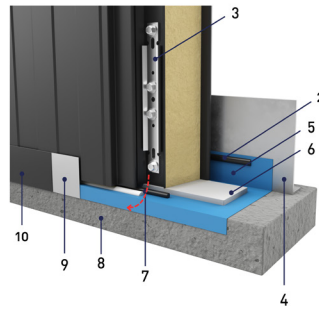


- Contains up to 53.8% recycled content
- Can contribute to obtaining LEED certification for a project



- No cavities, thermal bridges, or risk of interstitial condensation. Closed cell insulation
- Norex-M pressure-equalized rainscreen joint ensures that the building envelope is well sealed
- Option : factory-applied butyl sealant in the interior and exterior joint

PRESSURE-EQUALIZED RAINSCREEN JOINT



1. AIR CAVITY
2. BUTYL
3. FASTENER
4. STRUCTURAL ANGLE
5. AVB MEMBRANE

6. POLYETHYLENE
7. WEEP HOLE
8. FOUNDATION
9. TRIM HANGER
10. TRIM

MAIN PHYSICAL PROPERTIES OF POLYISOCYANURATE

PROPERTY	METHOD	RESULTS
R-value/in. of thickness	ASTM C518	→ R8/in @ 75 °F mean temperature ⁽⁴⁾ → R9/in @ 35 °F mean temperature ⁽⁴⁾
Density (lbs/ft ³)	ASTM D1622	Density (pcf) 2.29
Compressive strength (psi)	ASTM D1621	13.7 PSI (3" thick sample)
Flexural strength (psi)	ASTM C203	25-30
Permeability to water vapor (perms/in.)	ASTM E96/E96M	< 2.0
Water absorption (max.)	ASTM D2842	< 1.5 %
Dimensional stability (max.)	ASTM 2126	Dimensional stability: Std dev 0.2 7 day Vol Chg @ 70 °C/97 % R.H 4.3

TESTS / CERTIFICATIONS

	PROCEDURE	RESULTS
Fire – Canada	CAN/ULC-S101	Meets 10-minute stay-in-place requirements
	CAN/ULC-S102	Flame spread \leq 25 Smoke developed \leq 100 → Evaluated with steel skin
	CAN/ULC-S126	Test requirements have been met
	CAN/ULC-S134	Complies with the fire-spread and heat-flux limitations required by the National Building Code of Canada
	CAN/ULC-S138	Test requirements have been met
Fire – US	ASTM E84 / UL 723	Flame spread \leq 25 Smoke developed \leq 100 → Evaluated with steel skin
	ASTM D1929	Ignition Properties Flash Ignition Temperature : \geq 600°F (316°C) Spontaneous Ignition Temperature : \geq 800°F (427°C)
	NFPA 259	Test requirements have been met
	NFPA 285	Test requirements have been met
	NFPA 286	Test requirements have been met
	FM 4880	Available soon
Structural	ASTM E72	See Norex Deflection Chart
	FM 4881	Available soon
Thermal performance	ASTM C518	→ R8/in @ 75 °F mean temperature ⁽⁴⁾ → R9/in @ 35 °F mean temperature ⁽⁴⁾
	ASTM C1363	U-value (BTU/h*F*ft ²) 3" .0458 4" .0348 5" .0281 6" .0236 8" .0180
	NRCAN / DOE	Complies with Amend 14 and Title 10 / Chapter II / Subchapter D / Part 431 / Subpart R
Air infiltration	ASTM E283	Available soon
	ASTM E330	Available soon
	CAN/ULC-S741	Available soon
	CAN/ULC-S742	Available soon
Water infiltration	ASTM E331	Available soon
	AAMA 501.1	Available soon

Product availability is subject to change without notice and minimum quantities may be required for certain product configurations. For more information, please contact your local representative. All specifications provided in this document are current at the time of printing. Per Norbec Architectural's commitment to continuous product improvement, we reserve the right to modify specifications at any time without prior notice. The latest version can be found on the website. Norbec.com - 1 877 667-232

QAI LISTING NO : B1096-1